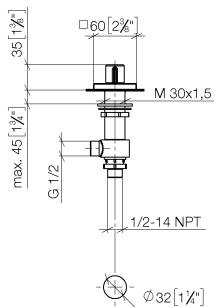


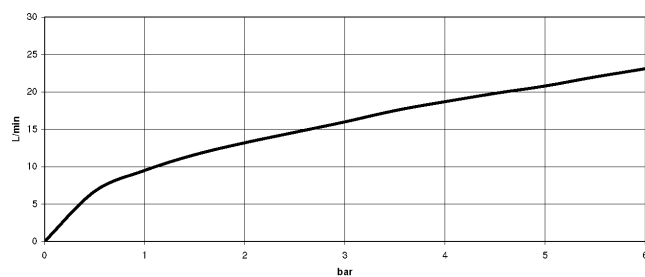
- hole diameter valve 32 mm
- rosette 60 x 60 mm
- with cold marking



mm [inches]



### Flow rate chart



### Codes & Standards

ASME A112.18.1

cUPC

EN 200

NSF372

### VA-Zeichen



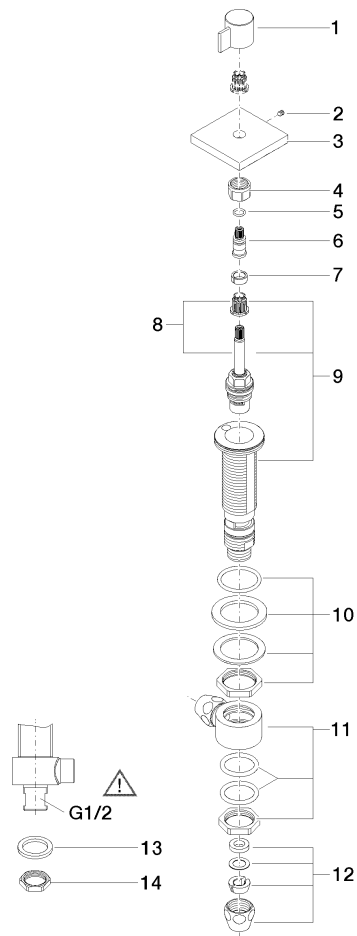
SYMETRICS Deck valve clockwise closing cold - Chrome

SYMETRICS

20 000 986 Product version from 4/30/2013

Certificates and sustainability

ETA_18	IAPMO_4976	IAPMO_6
--------	------------	---------



## Spare parts list

No.	Item Number	Name	Quantity used	Delivery time
8	90 90 03 137 00 90	top	1.00	2
3	09 27 98 001-00	rosette	1.00	10
10	04 23 10 032 78 90	fixing set	1.00	2
6	09 29 06 020-00	spindle	1.00	10
13	09 30 11 059 90	disc	1.00	2
14	09 23 10 012 90	nut	1.00	2
1	09 20 98 002-00	handle	1.00	10
9	04 17 11 045 37 90	side panel	1.00	60
11	04 17 11 023 10 90	distributor	1.00	2
5	90 14 10 060 00 90	seal	1.00	2
2	90 31 11 007 00 90	pin	1.00	2
12	90 23 30 040 00-00	threaded connector	2.00	10
4	90 23 30 023 00 90	nut	1.00	2
7	90 14 15 020 03 90	ring	1.00	2