

## IMO Three-hole basin mixer with pop-up waste - Chrome

IMO

20 713 670 Product version from 4/1/2014



- 165mm projection
- fixed spout
- rectangular, air-enriched flow
- height of mixer 220 mm
- height up to aerator 170 mm
- hole diameter valve 32 mm
- hole diameter spout 35 mm
- rosette 60 x 60 mm
- 2x screw-in M 10 x 1 pressure hose, leak-tested
- max. flow 5 l/min
- lead-free
- WRAS
- This product can help a building meet the requirements of Green Building Rating Systems, e.g. LEED®, BREEAM®, DGNB

Only suitable for basins with an overflow.

### Recommended miscellaneous

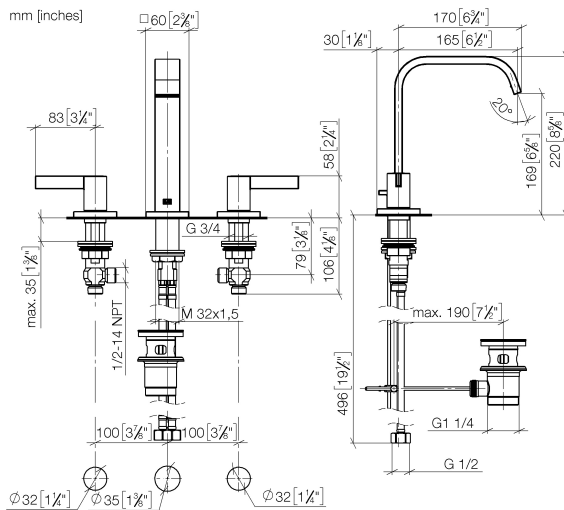


#### High pressure hoses -

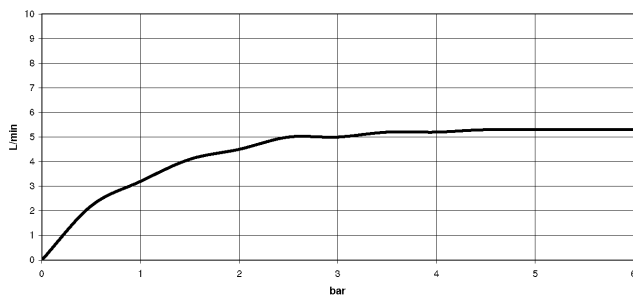
- 2x 3/8" x 1/2" x 500mm high pressure hose

12 506 970 90

20 713 670 Product version from 4/1/2014



### Flow rate chart



## Codes & Standards

DIN 4109

ISO 3822

## Scottish Water Byelaws

UK Water Supply Regulations

## Ü-Zeichen



## IMO Three-hole basin mixer with pop-up waste - Chrome

---

IMO

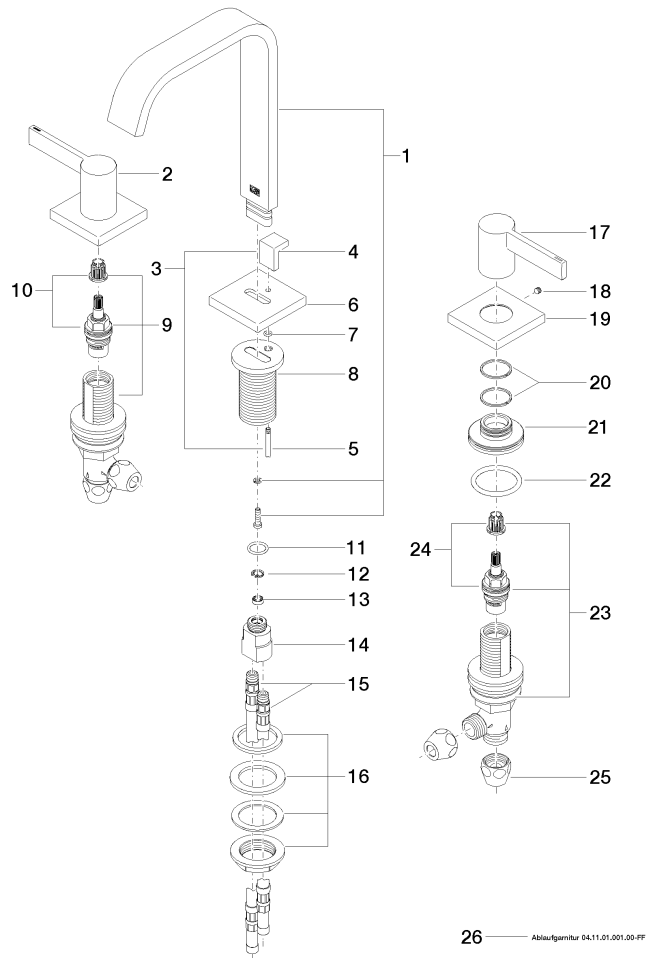
20 713 670 Product version from 4/1/2014

### Certificates and sustainability

---

WRAS\_2212

LGA\_28



# IMO Three-hole basin mixer with pop-up waste - Chrome

IMO

20 713 670 Product version from 4/1/2014

## Spare parts list

No.	Item Number	Name	Quantity used	Delivery time
12	09 16 01 016 90	ring	1.00	2
16	04 23 10 009 01 90	fixing set	1.00	2
23	90 17 11 040 52 90	side panel	1.00	2
24	90 90 03 152 00 90	top	1.00	2
10	90 90 03 153 00 90	top	1.00	2
13	09 23 01 033 90	flow reducer	1.00	2
9	90 17 11 040 53 90	side panel	1.00	2
19	09 27 22 043-00	rosette	2.00	10
17	09 20 67 012-00	handle ( cold )	1.00	10
15	04 30 04 016 00 90	hose	2.00	60
3	04 20 78 030 80-00	pull-rod	1.00	10
8	09 11 10 054 10 90	connection	1.00	2
21	09 30 11 198-00	disc	2.00	10
11	09 14 10 130 90	seal	1.00	2
5	09 31 09 080-00	pull-rod	1.00	10
7	09 14 10 166 90	seal	1.00	2
22	09 14 10 036 90	seal	1.00	2
2	09 20 67 011-00	handle ( hot )	1.00	10
6	09 27 78 032-00	rosette	1.00	10
1	90 28 22 267 00-00	spout	1.00	10
14	09 11 10 055 10 90	connection	1.00	2
4	09 20 78 030-00	handle	1.00	10
20	09 14 15 014 90	ring	4.00	2
25	90 23 30 040 00-00	threaded connector	4.00	10
26	90 11 01 001 00-00	pop-up waste	1.00	10
18	90 31 11 112 00 90	pin	2.00	2