

VAIA Three-hole basin mixer with pop-up waste - Brushed Platinum

VAIA

20 713 819 Product version from 3/13/2017



- 168mm projection
- pivotable spout 360°
- circular, air-enriched flow
- height of mixer 280 mm
- height up to aerator 191 mm
- hole diameter valve 32 mm
- hole diameter spout 35 mm
- rosette Ø 60 mm
- max. flow 5.7 l/min
- lead-free
- This product can help a building meet the requirements of Green Building Rating Systems, e.g. LEED®, BREEAM®, DGNB
- WRAS

Only suitable for basins with an overflow.

	Brushed Platinum	20 713 819-06
	Chrome	20 713 819-00
	Platinum	20 713 819-08
	Dark Chrome	20 713 819-19
	Brushed Durabrass (23kt Gold)	20 713 819-28
	Brushed Dark Brass	20 713 819-39
	Brushed Bronze	20 713 819-42
	Brushed Champagne (22kt Gold)	20 713 819-46
	Champagne (22kt Gold)	20 713 819-47
	Brushed Dark Platinum	20 713 819-99

Recommended miscellaneous



High pressure hoses -

- 2x 3/8" x 1/2" x 500mm high pressure hose

12 506 970 90

20 713 819 Product version from 3/13/2017

mm [inches]



Flow rate chart



Codes & Standards

DIN 4109

Executive Order
no. 1007

ISO 3822

Scottish Water
Byelaws

UK Water Supply
Regulations

Ü-Zeichen

XP P 41-280



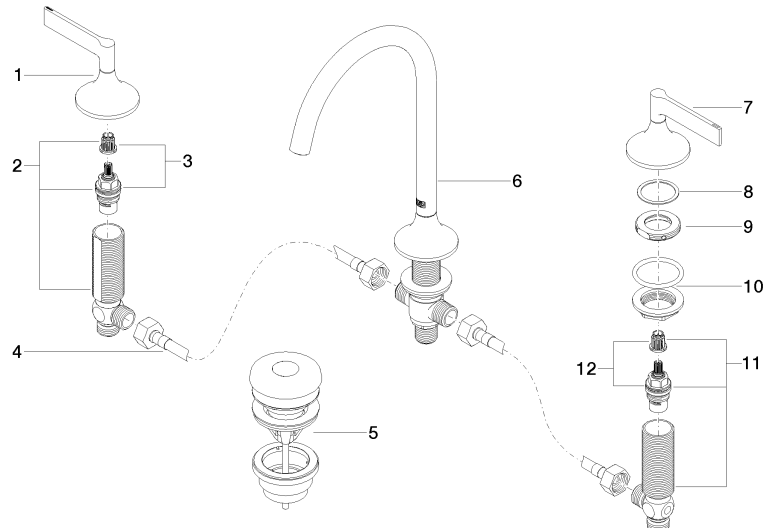
VAIA Three-hole basin mixer with pop-up waste - Brushed Platinum

VAIA

20 713 819 Product version from 3/13/2017

Certificates and sustainability

LGA_29 ACS_20 ACC LY GDV_0400 WRAS_2312



Spare parts list

No.	Item Number	Name	Quantity used	Delivery time
	11 04 17 11 055 50 90	side panel	1.00	2
	9 09 24 01 028 90	ring	2.00	2
	7 90 20 80 012 00-06	handle (cold)	1.00	10
	2 04 17 11 055 51 90	side panel	1.00	2
	8 09 28 10 003 90	ring	2.00	2
	10 04 23 10 032 46 90	fixing set	2.00	2
	12 90 90 03 150 00 90	top	1.00	2
	3 90 90 03 151 00 90	top	1.00	2
	5 10 125 970-06	Basin Waste with push fastening 1 1/4" - Brushed Platinum	1.00	2
	4 04 30 04 096 00 90	hose	1.00	2
	6 13 716 809-06	VAIA Deck-mounted basin spout without pop-up waste - Brushed Platinum	1.00	10
	1 90 20 80 013 00-06	handle (hot)	1.00	10