

VAIA Three-hole basin mixer with pop-up waste - Brushed Dark Brass

VAIA

20 713 819 Product version from 3/13/2017



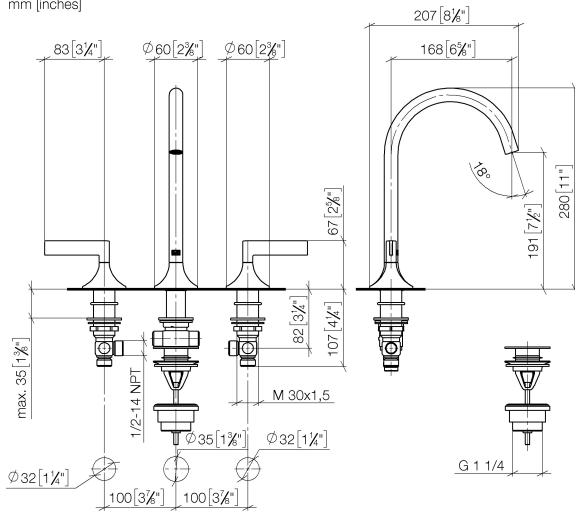
- 168mm projection
- pivotable spout 360°
- circular, air-enriched flow
- height of mixer 280 mm
- height up to aerator 191 mm
- hole diameter valve 32 mm
- hole diameter spout 35 mm
- rosette Ø 60 mm
- max. flow 5.7 l/min
- lead-free
- This product can help a building meet the requirements of Green Building Rating Systems, e.g. LEED®, BREEAM®, DGNB
- WRAS

Only suitable for basins with an overflow.

	Brushed Dark Brass	20 713 819-39
	Chrome	20 713 819-00
	Brushed Platinum	20 713 819-06
	Platinum	20 713 819-08
	Dark Chrome	20 713 819-19
	Brushed Durabronze (23kt Gold)	20 713 819-28
	Brushed Bronze	20 713 819-42
	Brushed Champagne (22kt Gold)	20 713 819-46
	Champagne (22kt Gold)	20 713 819-47
	Brushed Dark Platinum	20 713 819-99

20 713 819 Product version from 3/13/2017

mm [inches]



Flow rate chart



Codes & Standards

DIN 4109

Executive Order
no. 1007

ISO 3822

Scottish Water Byelaws

UK Water Supply Regulations

Ü-Zeichen



VAIA Three-hole basin mixer with pop-up waste - Brushed Dark Brass

VAIA

20 713 819 Product version from 3/13/2017

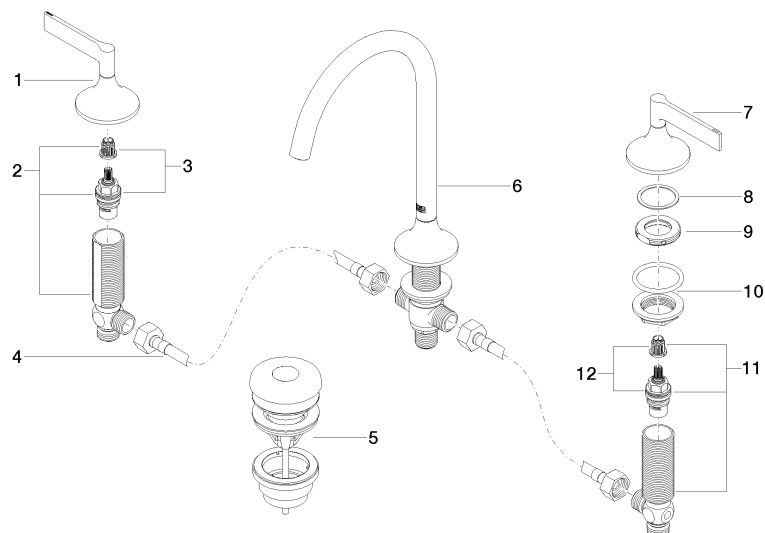
Certificates and sustainability

LGA_29

GDV_0400

WRAS_2312

Parts for other
finishes can be found
here: [Chrome](#)



Spare parts list

No.	Item Number	Name	Quantity used	Delivery time
1	90 20 80 013 00-39	handle (hot)	1.00	30
12	90 90 03 150 00 90	top	1.00	2
10	04 23 10 032 46 90	fixing set	2.00	2
6	13 716 809-39	spout	1.00	30
2	04 17 11 055 51 90	side panel	1.00	2
7	90 20 80 012 00-39	handle (cold)	1.00	30
5	10 125 970-39	Basin Waste with push fastening 1 1/4" - Brushed Dark Brass	1.00	30
9	09 24 01 028 90	ring	2.00	2
8	09 28 10 003 90	ring	2.00	2
11	04 17 11 055 50 90	side panel	1.00	2
3	90 90 03 151 00 90	top	1.00	2
4	04 30 04 096 00 90	hose	1.00	2