

# Angle valve - Brushed Dark Platinum

22 901 782    Product version from 5/27/2021



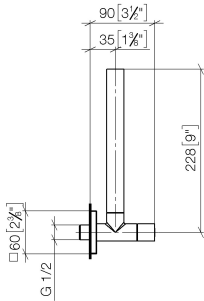
- rosette 60 x 60 mm
- hose covering 200mm, for shortening
- 1/2" connection
- WRAS

|   |                                |               |
|---|--------------------------------|---------------|
|    | Brushed Dark Platinum          | 22 901 782-99 |
|    | Chrome                         | 22 901 782-00 |
|    | Brushed Platinum               | 22 901 782-06 |
|    | Platinum                       | 22 901 782-08 |
|    | Dark Chrome                    | 22 901 782-19 |
|    | Brushed Durabronze (23kt Gold) | 22 901 782-28 |
|    | Matte Black                    | 22 901 782-33 |
|    | Brushed Champagne (22kt Gold)  | 22 901 782-46 |
|   | Champagne (22kt Gold)          | 22 901 782-47 |
|  | Brushed Chrome                 | 22 901 782-93 |

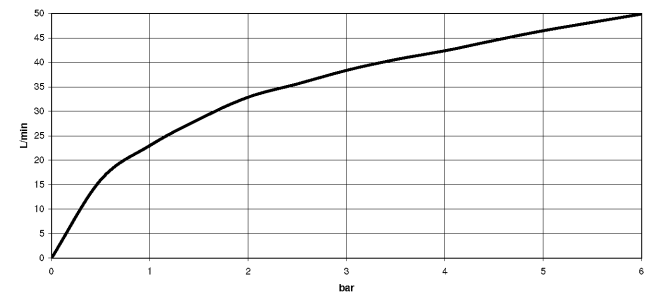
# Angle valve - Brushed Dark Platinum

22 901 782 Product version from 5/27/2021

mm [inches]



## Flow rate chart



## Codes & Standards

Scottish Water  
Byelaws

UK Water Supply  
Regulations



## Angle valve - Brushed Dark Platinum

---

22 901 782 Product version from 5/27/2021

### Certificates

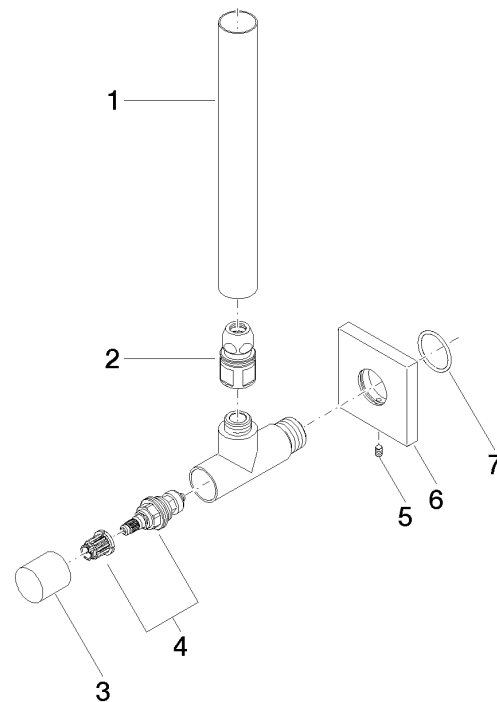
---

WRAS\_2205

# Angle valve - Brushed Dark Platinum

22 901 782 Product version from 5/27/2021

Parts for other  
finishes can be found  
here: [Chrome](#)



## Spare parts list

| No. | Item Number        | Name           | Quantity used | Delivery time |
|-----|--------------------|----------------|---------------|---------------|
| 1   | 09 28 22 020-99    | pipe           | 1             | 20            |
| 2   | 90 24 03 276 00 90 | conversion kit | 1             | 2             |
| 3   | 09 20 22 001-99    | handle         | 1             | 20            |
| 4   | 90 90 03 006 00 90 | top            | 1             | 2             |
| 5   | 09 31 11 048 90    | pin            | 1             | 2             |
| 6   | 09 27 78 042-99    | rosette        | 1             | 20            |
| 7   | 09 14 10 112 90    | seal           | 1             | 2             |