

## VAIA Two-hole bath mixer for free-standing assembly with hand shower set - Brushed Champagne (22kt Gold)

VAIA

25 943 819



- spout: circular, air-enriched flow
- max. flow 24.6 l/min at 3 bar flow pressure
- Hand shower: COMPACT RAIN, max. flow rate 6.8 l/min (at 3 bar)
- hand shower with anti-scale system
- 221mm projection
- pivotable spout 360°
- rotary diverter for bath/shower
- total height 920 mm
- stand pipes height 628 mm
- height up to aerator 816 mm
- slide-on rosettes Ø 100 mm
- gauge 150 mm
- metal shower hose 1250mm with integrated anti-twist protection
- pivotable shower holder on the right foot
- WRAS 240502008, 1802014
- Intrinsic protection against back flow.**

Intrinsic protection against back flow.

	Brushed Champagne (22kt Gold)	25 943 819-46
	Chrome	25 943 819-00
	Brushed Platinum	25 943 819-06
	Platinum	25 943 819-08
	Dark Chrome	25 943 819-19
	Brushed Durabronze (23kt Gold)	25 943 819-28
	Brushed Bronze	25 943 819-42
	Champagne (22kt Gold)	25 943 819-47
	Brushed Dark Platinum	25 943 819-99

### Required miscellaneous



#### **Concealed floor mounting -**

35 944 970 90

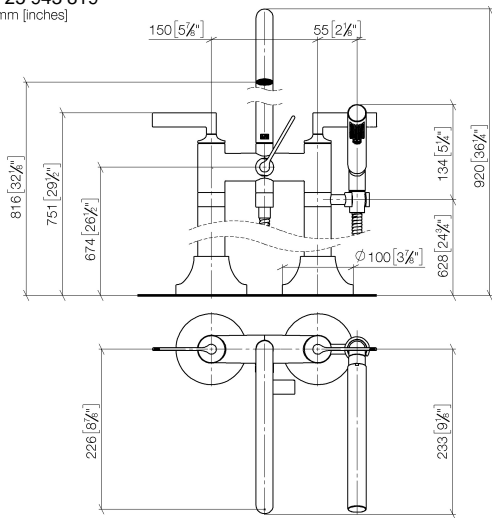
- max. recess depth 160 mm
- min. recess depth 80 mm



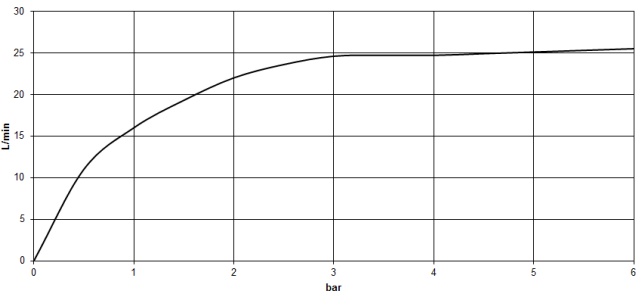
VAIA Two-hole bath mixer for free-standing assembly with hand shower set -  
Brushed Champagne (22kt Gold)

VAIA

25 943 819  
mm [inches]



Flow rate chart



Codes & Standards

DIN 4109	EN 1717	ISO 3822	Scottish Water Byelaws
UK Water Supply Regulations	Ü-Zeichen		



## VAIA Two-hole bath mixer for free-standing assembly with hand shower set - Brushed Champagne (22kt Gold)

---

VAIA

25 943 819

Certificates

---

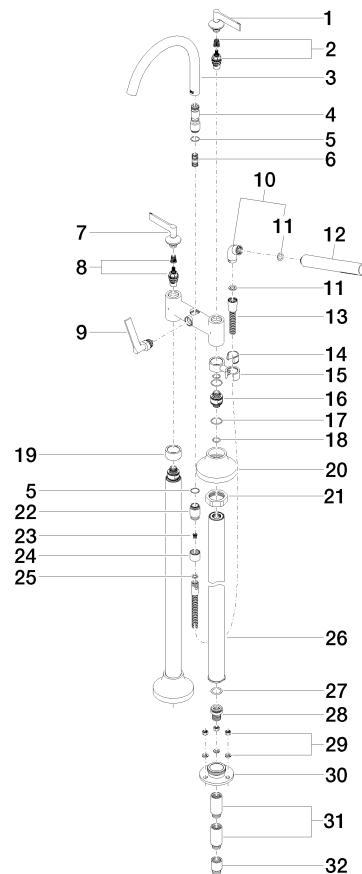
Belgauqa\_22\_276\_2 LGA\_29

WRAS\_240502

**VAIA Two-hole bath mixer for free-standing assembly with hand shower set -  
Brushed Champagne (22kt Gold)**

VAIA

25 943 819





## VAIA Two-hole bath mixer for free-standing assembly with hand shower set - Brushed Champagne (22kt Gold)

---

VAIA

25 943 819

### **Spare parts list**