

TARA Showerpipe without hand shower FlowReduce 220 mm - Brushed Dark Platinum

TARA

26 633 892 Product version from 4/1/2024



Rain shower:

- rain shower Ø 220 mm
- overhead shower: rain flow
- max. rainshower flow 7 l/min
- Function from: l/min

hand shower:

Control element:

- rotary diverter for fixed-riser shower/hand shower
- 1500 mm metal shower hose

Technical data:



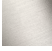
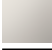








- shower with fixed riser projection 420mm
- height of fittings up to rain shower (bottom edge) 1007mm
- height of fittings up to top edge of elbow 1167mm
- rosette for wall mounting Ø 57mm
- rosette for shower holder Ø 55mm
- rosette for shower mixer Ø 65mm
- Pipe diameter 20 mm
- gauge 150 mm - 13 mm
- 1/2" connection

Notes:

- This product can help a building meet the requirements of Green Building Rating Systems, e.g. LEED®, BREEAM®, DGNB

This article does not include a hand shower!

Intrinsic protection against back flow.

	Brushed Dark Platinum	26 633 892-99
	Chrome	26 633 892-00
	Brushed Platinum	26 633 892-06
	Platinum	26 633 892-08
	Dark Chrome	26 633 892-19
	Brushed Durabronze (23kt Gold)	26 633 892-28
	Matte Black	26 633 892-33
	Brushed Dark Brass	26 633 892-39
	Brushed Bronze	26 633 892-42
	Brushed Champagne (22kt Gold)	26 633 892-46
	Champagne (22kt Gold)	26 633 892-47
	Brushed Chrome	26 633 892-93

TARA Showerpipe without hand shower FlowReduce 220 mm - Brushed Dark Platinum

TARA

26 633 892 Product version from 4/1/2024

Required miscellaneous



Hand shower - Brushed Dark Platinum 28 017 979-99

Required miscellaneous



Hand shower - Brushed Dark Platinum 28 018 979-99

Required miscellaneous



Hand shower FlowReduce - Brushed Dark Platinum 28 016 979-99 0010

Required miscellaneous



Hand shower - Brushed Dark Platinum 28 012 979-99

Required miscellaneous



SERIES-VARIOUS Hand shower FlowReduce - Brushed Dark Platinum 28 029 979-99 0010

Required miscellaneous



SERIES-VARIOUS Hand shower FlowReduce - Brushed Dark Platinum 28 025 979-99 0010

Required miscellaneous



Hand shower FlowReduce - Brushed Dark Platinum 28 012 979-99 0010

Required miscellaneous



Hand shower - Brushed Dark Platinum 28 016 979-99

Required miscellaneous



Hand shower - Brushed Dark Platinum 28 015 979-99

Required miscellaneous



Hand shower FlowReduce - Brushed Dark Platinum 28 018 979-99 0010

Required miscellaneous



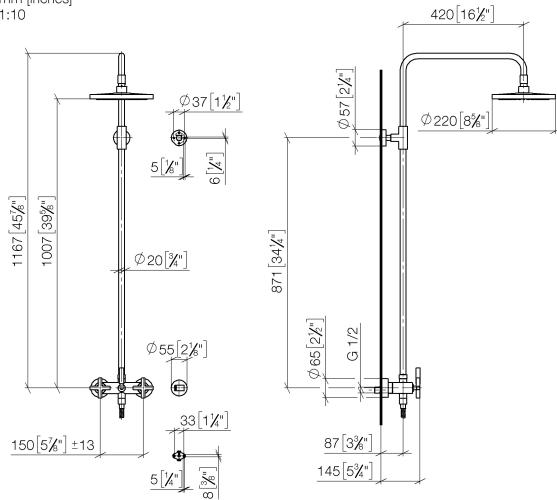
SERIES-VARIOUS Hand shower FlowReduce - Brushed Dark Platinum 28 027 979-99 0010

TARA Showerpipe without hand shower FlowReduce 220 mm - Brushed Dark Platinum

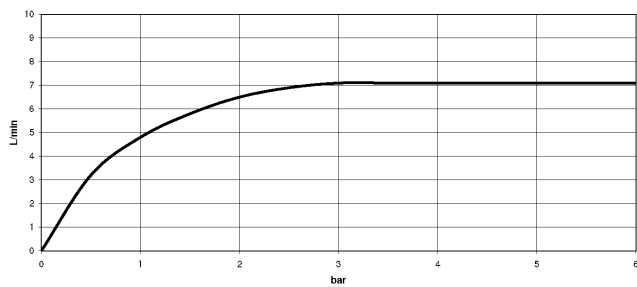
TARA

26 633 892 Product version from 4/1/2024

mm [inches]
1:10



Flow rate chart



Codes & Standards

DIN 4109

EN 1717

ISO 3822

Scottish Water Byelaws

UK Water Supply Regulations

Ü-Zeichen



TARA Showerpipe without hand shower FlowReduce 220 mm - Brushed Dark Platinum

TARA

26 633 892 Product version from 4/1/2024

Certificates and sustainability

Belgaqua_21-023-2 WRAS_2204

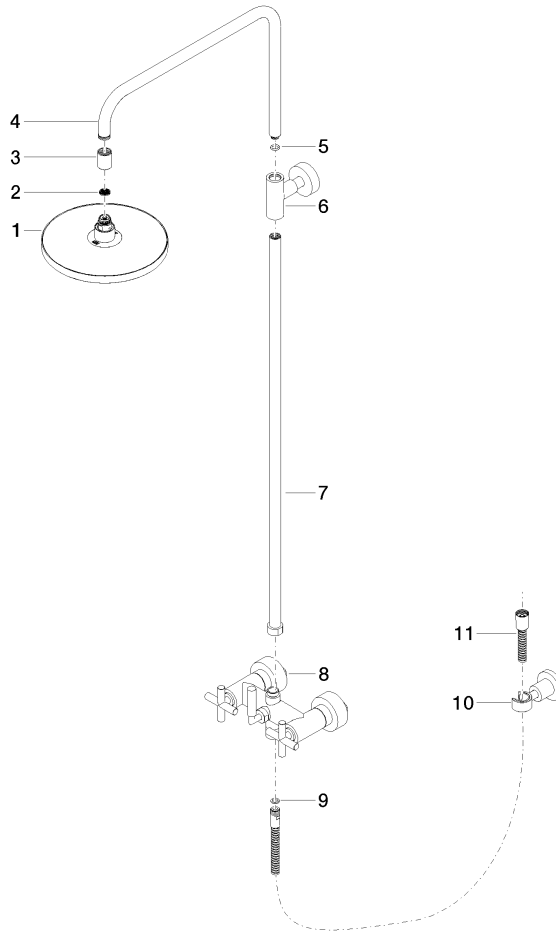
LGA_38

TARA Showerpipe without hand shower FlowReduce 220 mm - Brushed Dark Platinum

TARA

26 633 892 Product version from 4/1/2024

Parts for other finishes can be found here: [Chrome](#)



Spare parts list

No.	Item Number	Name	Quantity used	Delivery time
7	90 28 22 096 00-99	pipe	1.00	20
4	04 28 22 101 20-99	spout	1.00	20
6	90 17 11 037 00-99	holder	1.00	20
2	09 23 01 039 90	sieve	1.00	2
8	04 17 10 020 01-99	fitting	1.00	20
3	09 24 03 177 20-99	adaptor	1.00	20
10	28 050 892-99	TARA Wall bracket - Brushed Dark Platinum	1.00	20
11	28 304 970-99	Metal shower hose 1/2" x 3/8" x 1500 mm - Brushed Dark Platinum	1.00	20
9	90 14 20 026 00 90	seal	1.00	2
5	90 14 10 011 00 90	seal	1.00	2
1	90 12 05 092 20-99	shower	1.00	20