

## WATER TUBE Kneipp wall elbow with hose holder with individual rosettes - Brushed Dark Platinum

IMO

27 821 979



Fits: IMO, MEM, CL.1, CYO

- LAMINAR FLOW, max. flow rate 15 l/min (at 3 bar)
- with volume control
- rosette 60 x 60 mm
- holder for Kneipp hose
- 1/2" wall elbow
- without hose

Intrinsic protection against back flow.

Product change as of 1.4.2023: max. flow 15 l/min

	Brushed Dark Platinum	27 821 979-99
	Chrome	27 821 979-00
	Brushed Platinum	27 821 979-06
	Platinum	27 821 979-08
	Dark Chrome	27 821 979-19
	Brushed Light Gold	27 821 979-27
	Brushed Durabronze (23kt Gold)	27 821 979-28
	Matte Black	27 821 979-33
	Brushed Champagne (22kt Gold)	27 821 979-46
	Champagne (22kt Gold)	27 821 979-47
	Brushed Chrome	27 821 979-93

### Required miscellaneous



**WATER TUBE Kneipp hose black** 28 286 979-99  
**2000 mm - Brushed Dark Platinum**  
 •with holding ring  
 •hose nozzle with sleeve M33

### Required miscellaneous



**WATER TUBE Kneipp hose white** 28 285 979-99  
**2000 mm - Brushed Dark Platinum**  
 •with holding ring  
 •hose nozzle with sleeve M33

## WATER TUBE Kneipp wall elbow with hose holder with individual rosettes - Brushed Dark Platinum

IMO

27 821 979  
mm [inches]



### Flow rate chart



### Codes & Standards

EN 1717



## WATER TUBE Kneipp wall elbow with hose holder with individual rosettes - Brushed Dark Platinum

---

IMO

27 821 979

Certificates

---

Belgaqua\_22\_280\_2

## WATER TUBE Kneipp wall elbow with hose holder with individual rosettes - Brushed Dark Platinum

IMO

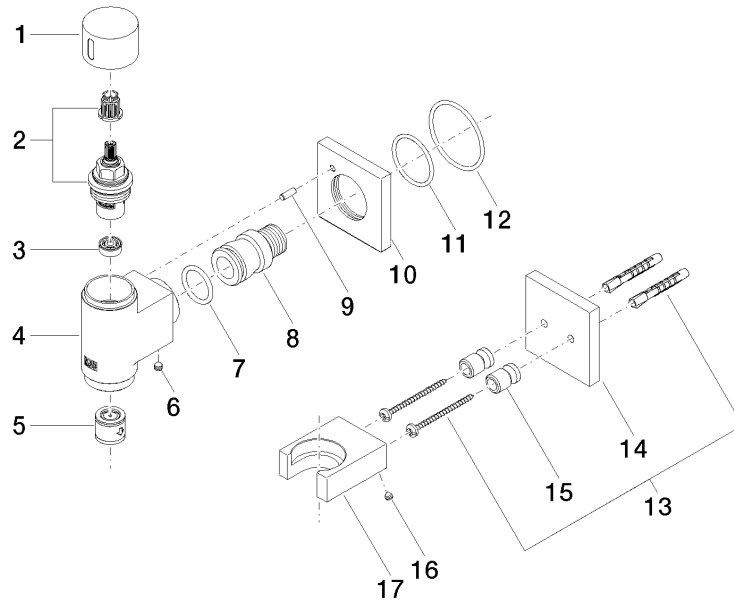
27 821 979

Product version up to 3/12/2018

Product version from 3/12/2018 to 3/6/2023

### Product version from 3/6/2023

Parts for other  
finishes can be found  
here: [Chrome](#)





## WATER TUBE Kneipp wall elbow with hose holder with individual rosettes - Brushed Dark Platinum

---

IMO

27 821 979

### Spare parts list

Product version up to 3/12/2018

Product version from 3/12/2018 to 3/6/2023

### Product version from 3/6/2023

No.	Item Number	Name	Quantity used	Delivery time
	28 486 979-99	connection	8	-

Spare part can no longer be ordered, please order the replacement item

---