

Wall elbow with integrated shower holder - Chrome

SERIES SPECIFIC

28 490 660 Product version from 10/1/2023



- 3/8" shower outlet
- rosette Ø 60 mm
- 1/2" connection
- WRAS

Intrinsic protection against back flow.

	Chrome	28 490 660-00
	Brushed Platinum	28 490 660-06
	Platinum	28 490 660-08
	Dark Chrome	28 490 660-19
	Light Gold	28 490 660-26
	Brushed Light Gold	28 490 660-27
	Brushed Durabronze (23kt Gold)	28 490 660-28
	Matte Black	28 490 660-33
	Brushed Dark Brass	28 490 660-39
	Brushed Bronze	28 490 660-42
	Brushed Champagne (22kt Gold)	28 490 660-46
	Champagne (22kt Gold)	28 490 660-47
	Cyprus	28 490 660-49
	Brushed Chrome	28 490 660-93
	Brushed Dark Platinum	28 490 660-99

Recommended miscellaneous



Concealed wall elbow -

35 085 970 90

- max. recess depth 163 mm
- min. recess depth 90 mm

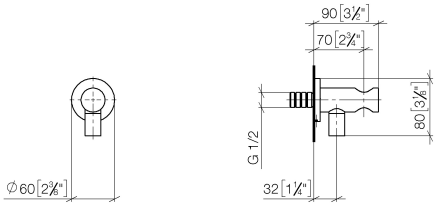
Wall elbow with integrated shower holder - Chrome

SERIES SPECIFIC

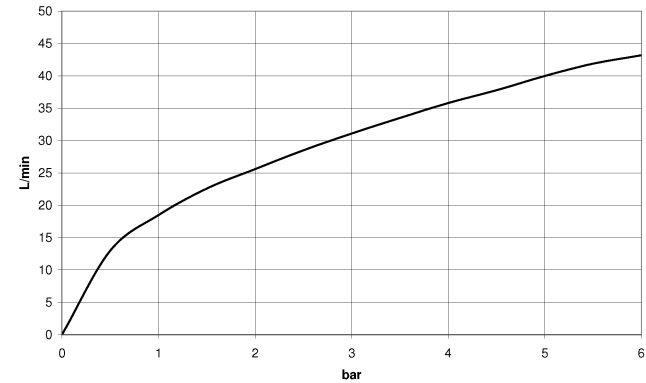
28 490 660

Product version from 10/1/2023

mm [inches]



Flow rate chart



Codes & Standards

EN 1717	Scottish Water Byelaws	UK Water Supply Regulations
---------	---------------------------	--------------------------------



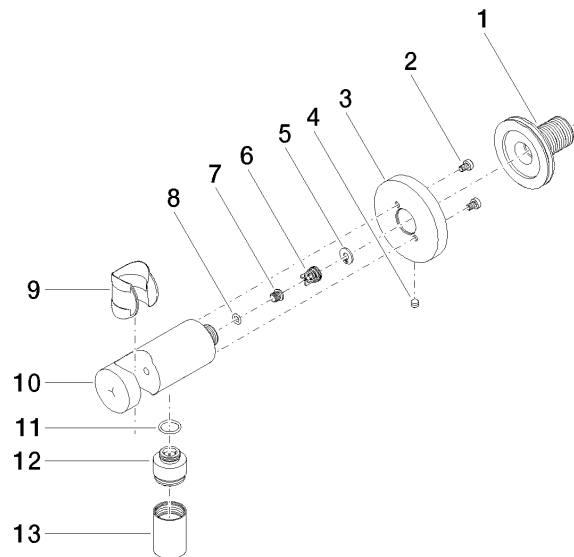
Wall elbow with integrated shower holder - Chrome

SERIES SPECIFIC

28 490 660 Product version from 10/1/2023

Certificates and sustainability

Belgaqua_21-024-2 WRAS_250402



Spare parts list

No.	Item Number	Name	Quantity used	Delivery time
2	09 30 30 037 90	screw	2.00	2
4	09 31 11 112 90	pin	1.00	60
3	09 27 66 001-00	rosette	1.00	10
8	09 14 10 001 90	seal	1.00	2
12	09 24 03 279-00	nipple	1.00	10
9	09 18 40 216 90	sleeve	1.00	2
11	09 14 10 213 90	seal	1.00	2
1	90 24 03 280 00 90	nipple	1.00	2
10	09 11 03 124-00	connection	1.00	10
5	09 16 01 023 90	ring	1.00	2
6	09 23 01 131 90	back-flow preventer	1.00	2
7	09 30 30 113 20 90	screw	1.00	2
13	90 21 02 069 00-00	cover	1.00	10