



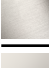


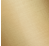
MADISON Body spray without volume control - Brushed Dark Platinum

MADISON

28 528 360



- spray head Ø 55mm
- ball-joint pivotable through 25° (in any direction)
- HORIZONTAL RAIN, max. flow rate 7 l/min (at 3 bar)
- rosette Ø 55 mm
- 1/2" connection

| | | |
|--|-------------------------------|---------------|
|  | Brushed Dark Platinum | 28 528 360-99 |
|  | Chrome | 28 528 360-00 |
|  | Brushed Platinum | 28 528 360-06 |
|  | Platinum | 28 528 360-08 |
|  | Durabrand (23kt Gold) | 28 528 360-09 |
|  | Brushed Durabrand (23kt Gold) | 28 528 360-28 |

Recommended miscellaneous



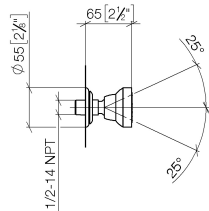
Concealed wall elbow -

35 085 970 90

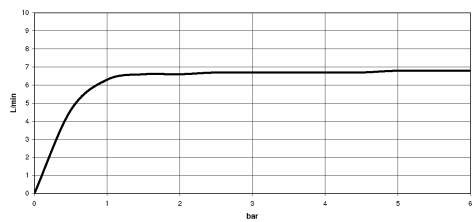
- max. recess depth 163 mm
- min. recess depth 90 mm

28 528 360

mm [inches]



Flow rate chart



Codes & Standards

| | | | |
|----------|----------|------------------------|-----------------------------|
| DIN 4109 | ISO 3822 | Scottish Water Byelaws | UK Water Supply Regulations |
|----------|----------|------------------------|-----------------------------|

Ü-Zeichen



MADISON Body spray without volume control - Brushed Dark Platinum

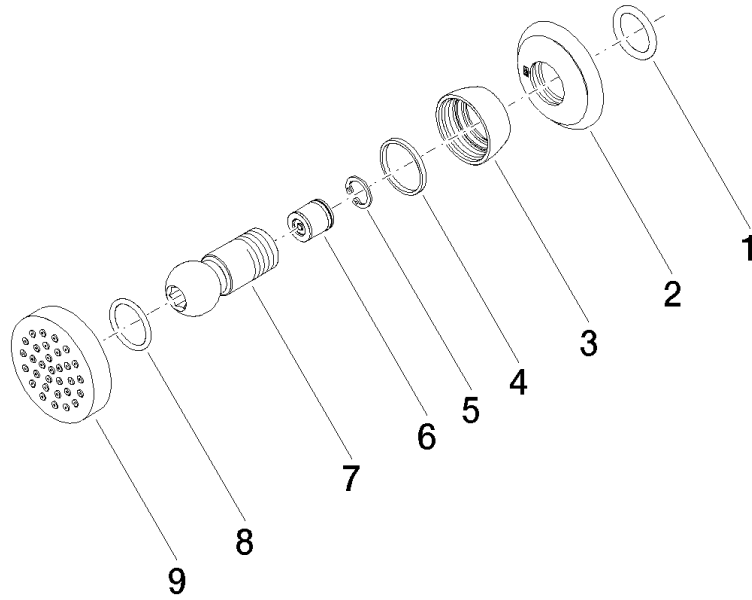
MADISON

28 528 360

Certificates

LGA_38

WRAS_240602





MADISON Body spray without volume control - Brushed Dark Platinum

MADISON

28 528 360

Spare parts list

| No. | Item Number | Name | Quantity used | Delivery time |
|-----|--------------------|------|---------------|---------------|
| | 90 14 10 026 00 90 | seal | 9 | 2 |