




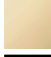



MADISON Rain shower with ceiling fixing 200 mm - Brushed Durabrass (23kt Gold)
MADISON

28 565 977	Product version up to 12/5/2019		
	<ul style="list-style-type: none"> <li>rain shower Ø 200 mm</li> <li>PURE RAIN, max. flow rate 14 l/min (at 3 bar)</li> <li>Function from: 8 l/min</li> <li>with anti-scale system</li> </ul>	 <div> Brushed Durabrass (23kt Gold) 28 565 977-28 </div>	
		 <div> Chrome 28 565 977-00 </div>	
		 <div> Brushed Platinum 28 565 977-06 </div>	
		 <div> Platinum 28 565 977-08 </div>	
		 <div> Durabrass (23kt Gold) 28 565 977-09 </div>	
		 <div> Brushed Dark Brass 28 565 977-39 </div>	
		 <div> Brushed Dark Platinum 28 565 977-99 </div>	

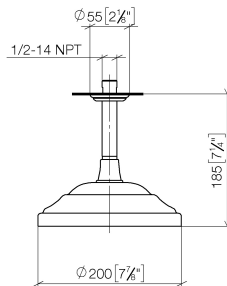
Recommended miscellaneous

	<div> Concealed wall elbow - 35 085 970 90 </div> <ul style="list-style-type: none"> <li>max. recess depth 163 mm</li> <li>min. recess depth 90 mm</li> </ul>
--	---

# MADISON Rain shower with ceiling fixing 200 mm - Brushed Durabron (23kt Gold)

MADISON

28 565 977 Product version up to 12/5/2019  
mm [inches]



Flow rate chart



## Codes & Standards

DIN 4109

EN 1112

ISO 3822

Scottish Water  
Byelaws

UK Water Supply  
Regulations

Ü-Zeichen



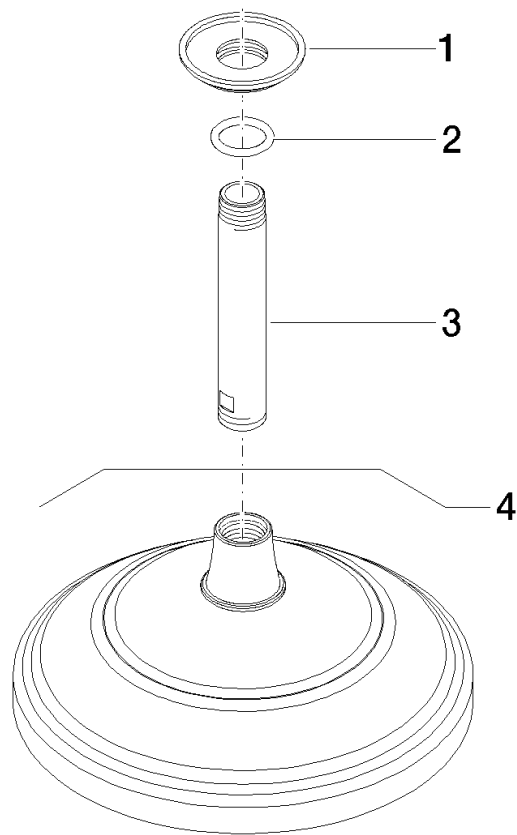
MADISON Rain shower with ceiling fixing 200 mm - Brushed Durabrass (23kt Gold)

MADISON

28 565 977    Product version up to 12/5/2019

Certificates and sustainability

DVGW_DW- 6517DN0	LGA_38	WRAS_250102
---------------------	--------	-------------



Spare parts list

No.	Item Number	Name	Quantity used	Delivery time
1	09 27 35 003-28	rosette	1.00	60
3	09 11 03 018-28	connection	1.00	60
4	28 535 977-28	shower	1.00	60
2	90 14 10 026 00 90	seal	2.00	2