

## Rain shower with wall fixing 300 mm - Brushed Platinum

SERIES SPECIFIC

28 679 970 Product version from 3/13/2017



- 450mm projection
- rain shower Ø 300 mm
- PURE RAIN, max. flow rate 14 l/min (at 3 bar)
- Function from: 10 l/min
- rosette Ø 60 mm
- 1/2" connection
- with anti-scale system
- quick clearing
- WRAS

|   |                               |               |
|---|-------------------------------|---------------|
|    | Brushed Platinum              | 28 679 970-06 |
|    | Chrome                        | 28 679 970-00 |
|    | Platinum                      | 28 679 970-08 |
|    | Dark Chrome                   | 28 679 970-19 |
|    | Light Gold                    | 28 679 970-26 |
|    | Brushed Light Gold            | 28 679 970-27 |
|    | Brushed Durabrass (23kt Gold) | 28 679 970-28 |
|    | Matte Black                   | 28 679 970-33 |
|    | Brushed Bronze                | 28 679 970-42 |
|   | Brushed Champagne (22kt Gold) | 28 679 970-46 |
|  | Champagne (22kt Gold)         | 28 679 970-47 |
|  | Brushed Chrome                | 28 679 970-93 |
|  | Brushed Dark Platinum         | 28 679 970-99 |

### Recommended miscellaneous

#### Concealed wall elbow -

35 085 970 90



- max. recess depth 163 mm
- min. recess depth 90 mm

28 679 970 Product version from 3/13/2017

mm [inches]



### Flow rate chart



### Codes & Standards

DIN 4109

EN 1112

ISO 3822

Scottish Water  
Byelaws

UK Water Supply  
Regulations

Ü-Zeichen



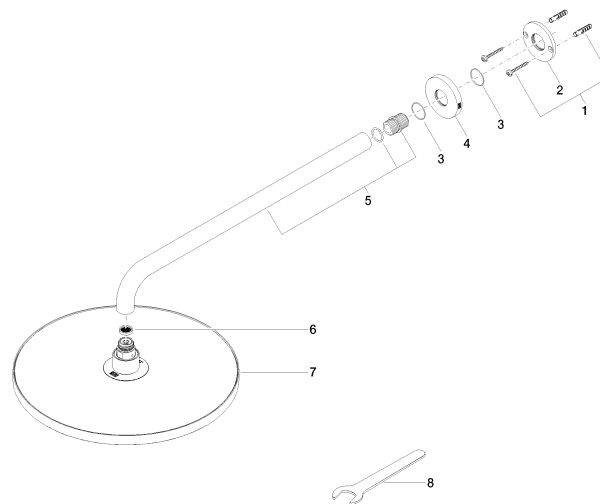
Rain shower with wall fixing 300 mm - Brushed Platinum

SERIES SPECIFIC

28 679 970 Product version from 3/13/2017

Certificates and sustainability

|           |                     |        |
|-----------|---------------------|--------|
| WRAS_2212 | DVGW_DW-<br>6517DN0 | LGA_29 |
|-----------|---------------------|--------|



## Spare parts list

| No. | Item Number        | Name       | Quantity used | Delivery time |
|-----|--------------------|------------|---------------|---------------|
| 4   | 09 27 97 015-06    | rosette    | 1.00          | 10            |
| 5   | 90 11 03 070 00-06 | pipe       | 1.00          | 10            |
| 2   | 09 17 20 120 90    | holder     | 1.00          | 2             |
| 1   | 04 30 31 032 00 90 | fixing set | 1.00          | 2             |
| 7   | 04 12 05 091 00-06 | shower     | 1.00          | 10            |
| 3   | 09 14 10 150 90    | seal       | 2.00          | 2             |
| 6   | 09 23 01 075 90    | insert     | 1.00          | 2             |
| 8   | 90 30 09 069 00 90 | key        | 1.00          | 2             |