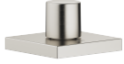


Two-way diverter - Brushed Platinum

SERIES SPECIFIC

29 125 980 Product version from 4/30/2013

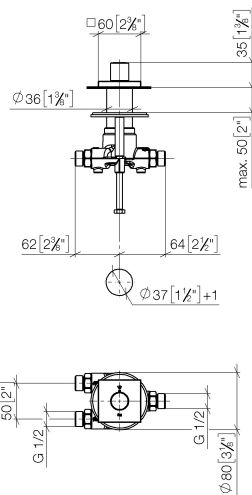


- rotary diverter
- hole diameter 37 mm
- rosette 60 x 60 mm
- 1/2" connection
- max. flow 23.5 l/min
- with label

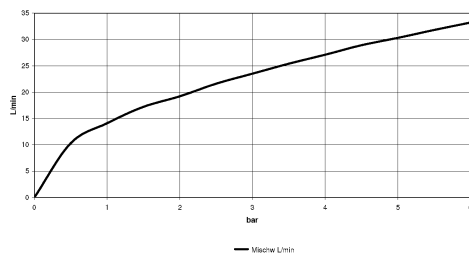
Not suitable for combining with Perfecto (12 614 970 90).

29 125 980 Product version from 4/30/2013

mm [inches]



Flow rate chart



Codes & Standards

ASME A112.18.1

cUPC

DIN 4109

ISO 3822

Ü-Zeichen



Two-way diverter - Brushed Platinum

SERIES SPECIFIC

29 125 980 Product version from 4/30/2013

Certificates and sustainability

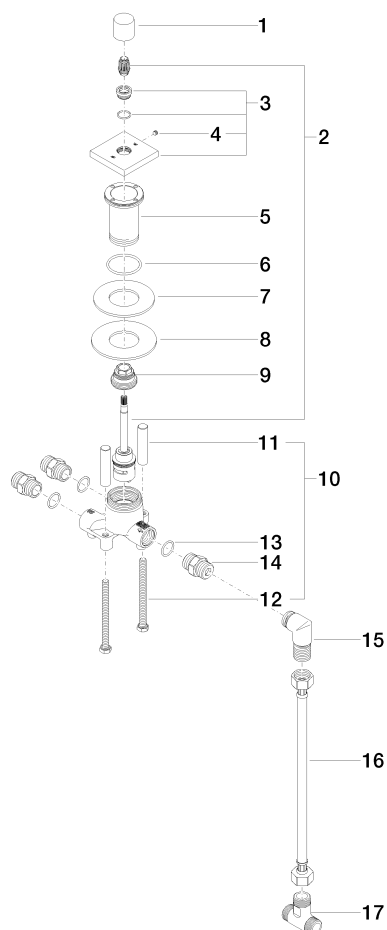
LGA_18

IAPMO_4976

Two-way diverter - Brushed Platinum

SERIES SPECIFIC

29 125 980 Product version from 4/30/2013



Spare parts list

No.	Item Number	Name	Quantity used	Delivery time
	9 09 24 04 223 90	nipple	1.00	2
	6 09 14 10 143 90	seal	1.00	2
	5 09 30 01 105 90	sleeve	1.00	2
	12 09 30 30 153 90	screw	2.00	2
	15 09 11 03 009 90	connection	1.00	2
	17 09 17 11 051 90	adaptor	1.00	2
	10 04 30 30 153 00 90	fixing set	1.00	2
	7 09 14 05 059 90	seal	1.00	2
	1 09 20 98 001-06	handle	1.00	10
	3 04 27 98 021 00-06	rosette	1.00	10
	11 09 18 40 114 90	sleeve	2.00	2
	8 09 30 11 136 90	disc	1.00	2
	2 90 90 03 211 00 90	diverter	1.00	2
	16 12 501 970 90	High pressure hose 1/2" x 1/2" x 300 mm -	1.00	-
Spare part can no longer be ordered, please order the replacement item				
	4 90 31 11 112 00 90	pin	1.00	2
	13 90 14 10 010 00 90	seal	3.00	2
	14 90 24 03 168 00 90	nipple	3.00	2