




Two-way diverter for bath rim or tile edge installation - Champagne (22kt Gold) SERIES SPECIFIC

29 140 670 Product version from 6/30/2015



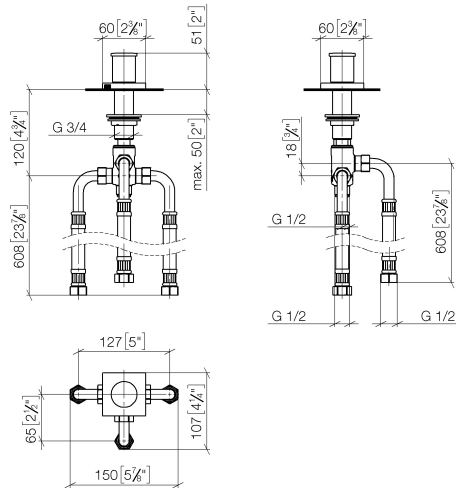
- automatic bath/shower diverter
- hole diameter 32 mm
- rosette 60 x 60 mm
- 1/2" connection
- max. flow 64.9 l/min at 3 bar flow pressure
- WRAS

| | | |
|---|--------------------------------|---------------|
|  | Champagne (22kt Gold) | 29 140 670-47 |
|  | Chrome | 29 140 670-00 |
|  | Brushed Platinum | 29 140 670-06 |
|  | Platinum | 29 140 670-08 |
|  | Dark Chrome | 29 140 670-19 |
|  | Brushed Light Gold | 29 140 670-27 |
|  | Brushed Durabronze (23kt Gold) | 29 140 670-28 |
|  | Matte Black | 29 140 670-33 |
|  | Brushed Dark Bronze | 29 140 670-39 |
|  | Brushed Champagne (22kt Gold) | 29 140 670-46 |
|  | Brushed Chrome | 29 140 670-93 |
|  | Brushed Dark Platinum | 29 140 670-99 |

Two-way diverter for bath rim or tile edge installation - Champagne (22kt Gold) SERIES SPECIFIC

29 140 670 Product version from 6/30/2015

mm [inches]



Flow rate chart



Codes & Standards

DIN 4109

ISO 3822

Ü-Zeichen



Two-way diverter for bath rim or tile edge installation - Champagne (22kt Gold) SERIES SPECIFIC

29 140 670 Product version from 6/30/2015

Certificates and sustainability

LGA_29

