

MEM Single-lever basin mixer - Chrome

MEM

29 210 782



- hole diameter 35 mm
- rosette 60 x 60 mm
- 3x screw-in M 10 x 1 pressure hose, leak-tested

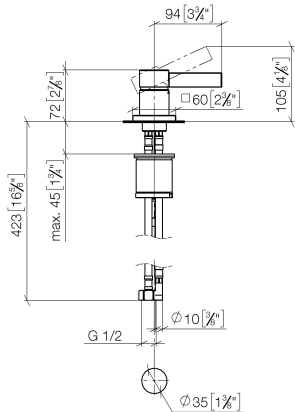
| | | |
|--|-------------------------------------|---------------|
|  | Chrome | 29 210 782-00 |
|  | Brushed Platinum | 29 210 782-06 |
|  | Platinum | 29 210 782-08 |
|  | Dark Chrome | 29 210 782-19 |
|  | Brushed Durabronze (23kt Gold) | 29 210 782-28 |
|  | Brushed Champagne (22kt Gold) | 29 210 782-46 |
|  | Champagne (22kt Gold) | 29 210 782-47 |
|  | Brushed Dark Platinum | 29 210 782-99 |

MEM Single-lever basin mixer - Chrome

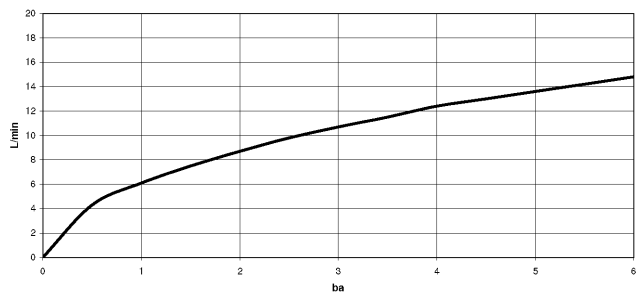
MEM

29 210 782

mm [inches]



Flow rate chart



Codes & Standards

DIN 4109

Executive Order
no. 1007

ISO 3822

Ü-Zeichen



MEM Single-lever basin mixer - Chrome

MEM

29 210 782

Certificates

GDV_0400

LGA_28

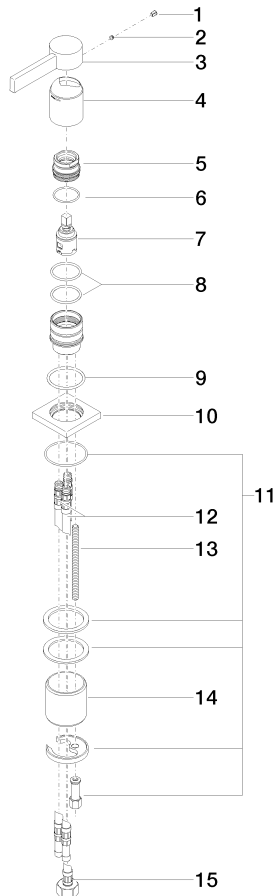
29 210 782

Product version from 3/10/2014 to 3/18/2019

Product version from 3/18/2019 to 5/5/2021

Product version from 5/5/2021

Parts for other
finishes can be found
here: Brushed
Platinum





MEM Single-lever basin mixer - Chrome

MEM

29 210 782

Spare parts list

Product version from 3/10/2014 to 3/18/2019

Product version from 3/18/2019 to 5/5/2021

Product version from 5/5/2021

| No. | Item Number | Name | Quantity used | Delivery time |
|-----|-----------------|------|---------------|---------------|
| | 09 31 20 017 90 | plug | 17 | 60 |