

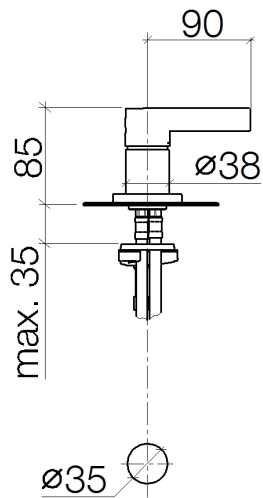
Single-lever basin mixer - Chrome

SERIES-VARIOUS

29 210 971 Product version up to 4/29/2021



- hole diameter 35 mm
- rosette Ø 60 mm
- 3x screw-in M 10 x 1 pressure hose, leak-tested



Flow rate chart



Codes & Standards

DIN 4109

Executive Order
no. 1007

ISO 3822

Ü-Zeichen



Single-lever basin mixer - Chrome

SERIES-VARIOUS

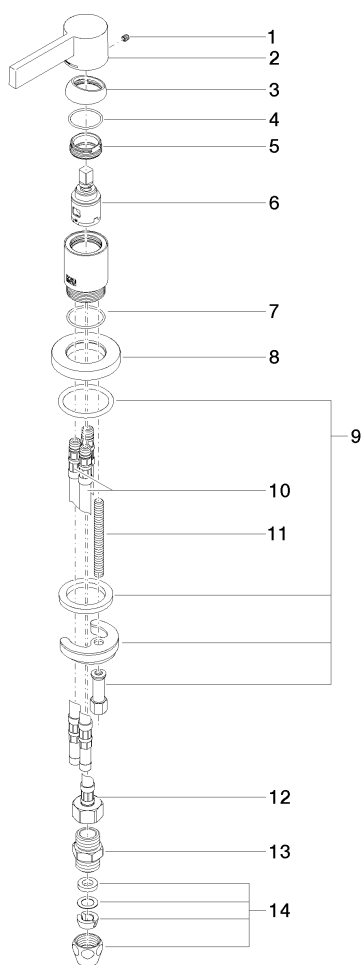
29 210 971 Product version up to 4/29/2021

Certificates and sustainability

LGA_28

GDV_0400

29 210 971 Product version up to 4/29/2021



Spare parts list

No.	Item Number	Name	Quantity used	Delivery time
2	09 20 87 004-00	handle	1.00	10
12	04 30 04 019 00 90	hose	1.00	2
3	09 28 30 026-00	cover	1.00	10
8	09 27 97 040-00	rosette	1.00	10
5	09 24 04 266 90	nut	1.00	2
4	09 14 10 091 90	seal	1.00	2
10	04 30 04 016 00 90	hose	2.00	60
7	09 14 10 110 90	seal	1.00	2
11	09 31 11 011 90	pin	1.00	2
9	04 30 11 085 97 90	fixing set	1.00	2
6	90 15 05 042 00 90	cartridge	1.00	2
1	90 31 11 030 00 90	pin	1.00	2
14	90 23 30 040 00-00	threaded connector	2.00	10
13	90 24 03 168 00 90	nipple	1.00	2