

VAIA Wall-mounted valve cold water without pop-up waste - Brushed Platinum

VAIA

30 010 809



- 151mm projection
- fixed spout
- adapter with male thread 3/4"
- hole diameter 35 mm
- rosette Ø 60 mm
- max. flow 5.7 l/min
- lead-free
- This product can help a building meet the requirements of Green Building Rating Systems, e.g. LEED®, BREEAM®, DGNB
- WRAS

| | | |
|---|--------------------------------|---------------|
|  | Brushed Platinum | 30 010 809-06 |
|  | Chrome | 30 010 809-00 |
|  | Platinum | 30 010 809-08 |
|  | Dark Chrome | 30 010 809-19 |
|  | Brushed Durabronze (23kt Gold) | 30 010 809-28 |
|  | Brushed Bronze | 30 010 809-42 |
|  | Brushed Champagne (22kt Gold) | 30 010 809-46 |
|  | Champagne (22kt Gold) | 30 010 809-47 |
|  | Brushed Dark Platinum | 30 010 809-99 |

Recommended miscellaneous



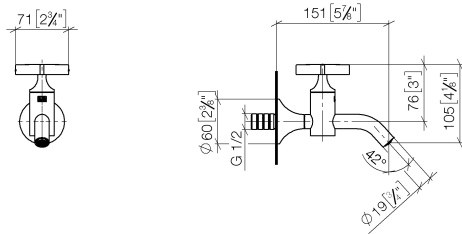
Concealed wall elbow -

35 085 970 90

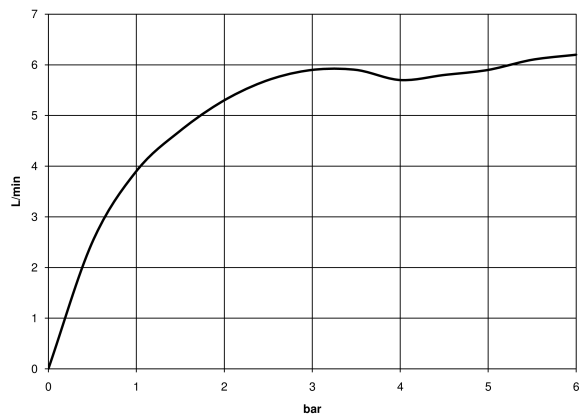
- min. recess depth 90 mm
- max. recess depth 163 mm

30 010 809

mm [inches]



Flow rate chart



Codes & Standards

DIN 4109

ISO 3822

Scottish Water
Byelaws

UK Water Supply
Regulations

Ü-Zeichen



VAIA Wall-mounted valve cold water without pop-up waste - Brushed Platinum

VAIA

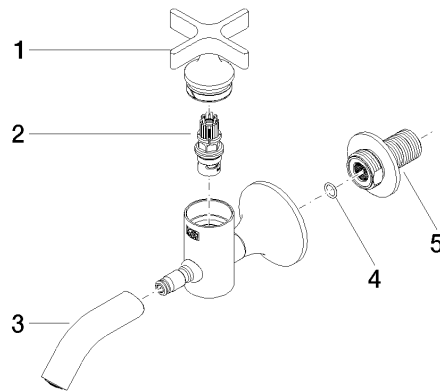
30 010 809

Certificates and sustainability

LGA_18

WRAS_240102

30 010 809



Spare parts list

| No. | Item Number | Name | Quantity used | Delivery time |
|-----|--------------------|--------|---------------|---------------|
| 1 | 90 20 66 025 00-06 | handle | 1.00 | 10 |
| 2 | 90 90 03 175 00 90 | top | 1.00 | 2 |
| 5 | 09 24 03 269 90 | nipple | 1.00 | 2 |
| 3 | 90 28 22 381 00-06 | spout | 1.00 | 10 |
| 4 | 90 14 10 060 00 90 | seal | 1.00 | 2 |