

LOT BAR TAP Two-hole mixer with individual rosettes - Chrome

LOT

32 805 680



- 165mm projection
 - pivotable spout 360°
 - air-enriched flow
 - height of mixer 230 mm
 - height up to laminar flow regulator 205 mm
 - individual rosette 55 x 55 mm
 - hole diameter spout 35 mm
 - single-lever mixer hole diameter 44 mm
 - max. flow 8 l/min at 3 bar flow pressure
 - lead-free
 - WRAS 1909073
 - This product can help a building meet the requirements of Green Building Rating Systems, e.g. LEED®, BREEAM®, DGNB
- Operating unit can be positioned freely.

| | | |
|--|--------------------------------|---------------|
| | Chrome | 32 805 680-00 |
| | Brushed Platinum | 32 805 680-06 |
| | Platinum | 32 805 680-08 |
| | Dark Chrome | 32 805 680-19 |
| | Brushed Durabronze (23kt Gold) | 32 805 680-28 |
| | Brushed Champagne (22kt Gold) | 32 805 680-46 |
| | Champagne (22kt Gold) | 32 805 680-47 |
| | Brushed Dark Platinum | 32 805 680-99 |

Recommended miscellaneous

Strainer waste with control handle - Chrome 10 711 970-00

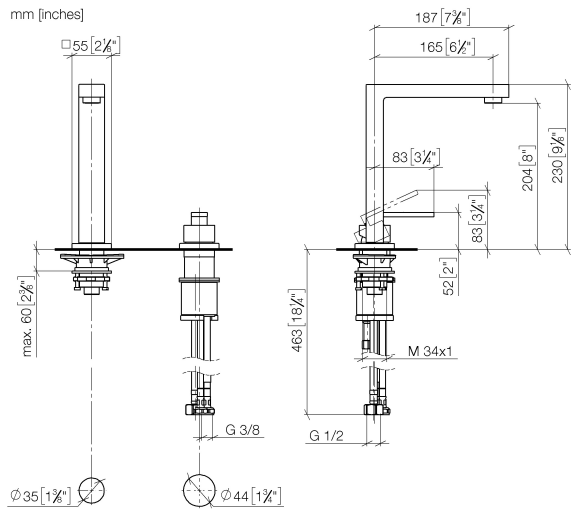


Recommended miscellaneous

Dispenser with rosette - Chrome 82 439 970-00



32 805 680



Flow rate chart



Codes & Standards

DIN 4109

EN 817

Executive Order
no. 1007

ISO 3822

Scottish Water
Byelaws

UK Water Supply
Regulations

Ü-Zeichen

VA-Zeichen



LOT BAR TAP Two-hole mixer with individual rosettes - Chrome

LOT

32 805 680

Certificates

LGA_18

WRAS_1909

GDV_0400

ETA_18

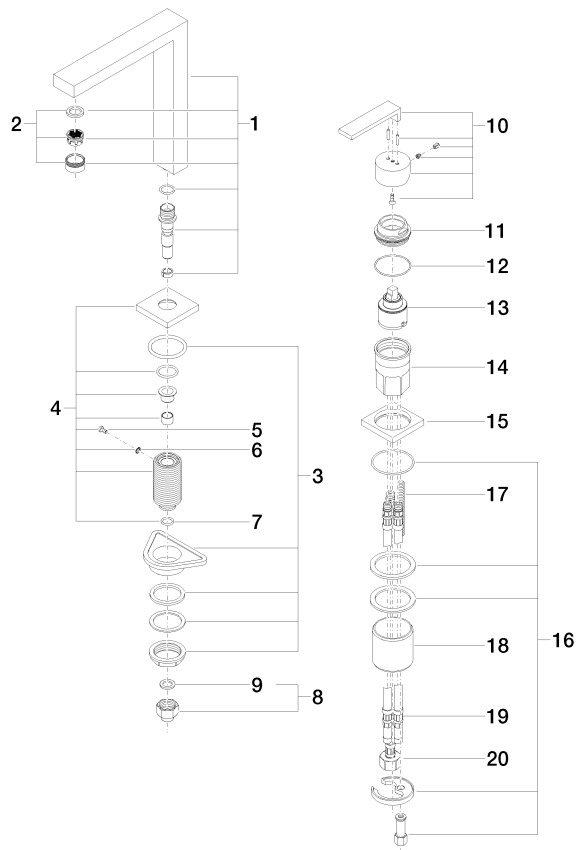
32 805 680

Product version from 5/31/2010 to 3/10/2021

Product version from 3/10/2021 to 5/10/2021

Product version from 5/10/2021

Product version from 6/1/2022





LOT BAR TAP Two-hole mixer with individual rosettes - Chrome

LOT

32 805 680

Spare parts list

Product version from 5/31/2010 to 3/10/2021

Product version from 3/10/2021 to 5/10/2021

Product version from 5/10/2021

Product version from 6/1/2022