

LOT BAR TAP Two-hole mixer with individual rosettes - Brushed Durabronze (23kt Gold)

LOT

32 805 680 Product version from 5/31/2010 to 3/10/2021



- 165mm projection
 - pivotable spout 360°
 - air-enriched flow
 - height of mixer 230 mm
 - height up to laminar flow regulator 205 mm
 - individual rosette 55 x 55 mm
 - hole diameter spout 35 mm
 - single-lever mixer hole diameter 44 mm
 - max. flow 8 l/min at 3 bar flow pressure
 - lead-free
 - WRAS
 - This product can help a building meet the requirements of Green Building Rating Systems, e.g. LEED®, BREEAM®, DGNB
- Operating unit can be positioned freely.

	Brushed Durabronze (23kt Gold)	32 805 680-28
	Chrome	32 805 680-00
	Brushed Platinum	32 805 680-06
	Platinum	32 805 680-08
	Dark Chrome	32 805 680-19
	Brushed Bronze	32 805 680-42
	Brushed Champagne (22kt Gold)	32 805 680-46
	Champagne (22kt Gold)	32 805 680-47
	Brushed Dark Platinum	32 805 680-99

Recommended miscellaneous

Strainer waste with control handle 10 711 970-28
- Brushed Durabronze (23kt Gold)



Recommended miscellaneous

Dispenser with rosette - Brushed Durabronze (23kt Gold) 82 439 970-28





LOT BAR TAP Two-hole mixer with individual rosettes - Brushed Durabrass
(23kt Gold)

LOT

32 805 680 Product version from 5/31/2010 to 3/10/2021

Certificates and sustainability

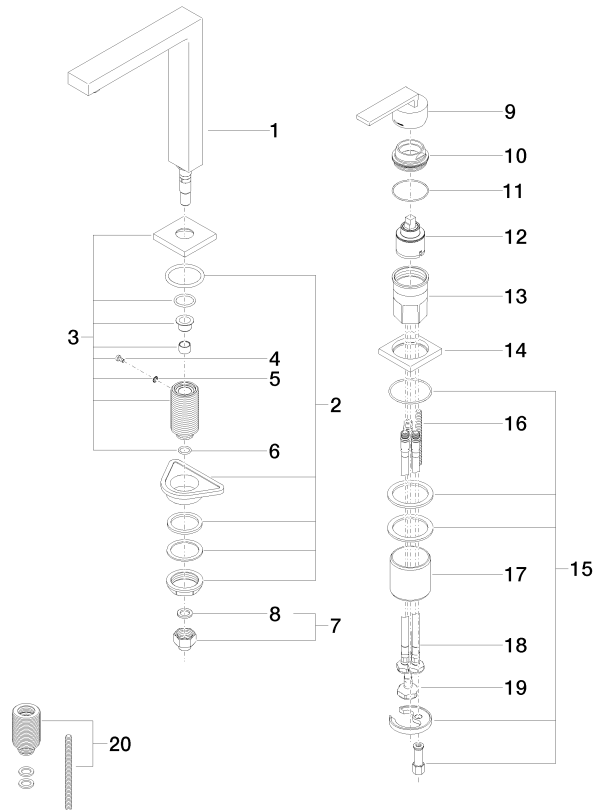
GDV_0400	LGA_18	ETA_18	WRAS_250402
----------	--------	--------	-------------

LOT BAR TAP Two-hole mixer with individual rosettes - Brushed Durabronz (23kt Gold)

LOT

32 805 680 Product version from 5/31/2010 to 3/10/2021

Parts for other
finishes can be found
here: [Chrome](#)



Spare parts list

No.	Item Number	Name	Quantity used	Delivery time
	11 09 14 10 037 90	seal	1.00	2
	19 04 30 04 019 00 90	hose	1.00	2
	5 09 30 11 028 90	disc	1.00	2
	3 90 27 78 023 00-28	rosette	1.00	20
	7 04 24 04 166 10 90	nipple	1.00	2
	16 09 31 11 011 90	pin	1.00	2
	4 09 30 30 057 90	screw	1.00	2
	18 04 30 04 104 00 90	hose	2.00	2
	15 04 30 11 038 02 90	fixing set	1.00	2
	20 12 802 970 90	Extension set -	1.00	60
	1 90 11 06 192 04-28	spout	1.00	20
	17 09 18 40 079 90	sleeve	1.00	2
	13 09 30 01 100 10 90	sleeve	1.00	2
	9 90 20 78 040 00-28	handle	1.00	20
	2 04 23 10 044 01 90	fixing set	1.00	2
	10 09 24 04 142-28	nut	1.00	20
	14 09 27 78 007-28	rosette	1.00	20
	6 90 14 10 077 00 90	seal	1.00	2
	8 90 14 20 002 00 90	seal	1.00	2
	12 90 15 05 045 00 90	cartridge	1.00	2