

## MEM Two-hole mixer with individual rosettes - Platinum

MEM

32 815 682 Product version from 3/1/2023



- 241mm projection
- pivotable spout 360°
- Optional swivel limiter available with swivel limiter set 12 820 970 90
- air-enriched flow
- max. flow 6.3 l/min at 3 bar flow pressure
- lead-free
- This product can help a building meet the requirements of Green Building Rating Systems, e.g. LEED®, BREEAM®, DGNB
- WRAS

Operating unit can be positioned freely.

	Platinum	32 815 682-08
	Chrome	32 815 682-00
	Brushed Platinum	32 815 682-06
	Durabronze (23kt Gold)	32 815 682-09
	Dark Chrome	32 815 682-19
	Brushed Durabronze (23kt Gold)	32 815 682-28
	Matte Black	32 815 682-33
	Brushed Bronze	32 815 682-42
	Brushed Champagne (22kt Gold)	32 815 682-46
	Champagne (22kt Gold)	32 815 682-47
	Brushed Chrome	32 815 682-93
	Brushed Dark Platinum	32 815 682-99

### Recommended miscellaneous

**Swivel limitation set -**

12 820 970 90



### Recommended miscellaneous

**Dispenser with rosette - Platinum** 82 444 970-08



### Recommended miscellaneous

**Strainer waste with control handle - Platinum** 10 710 970-08







## MEM Two-hole mixer with individual rosettes - Platinum

---

MEM

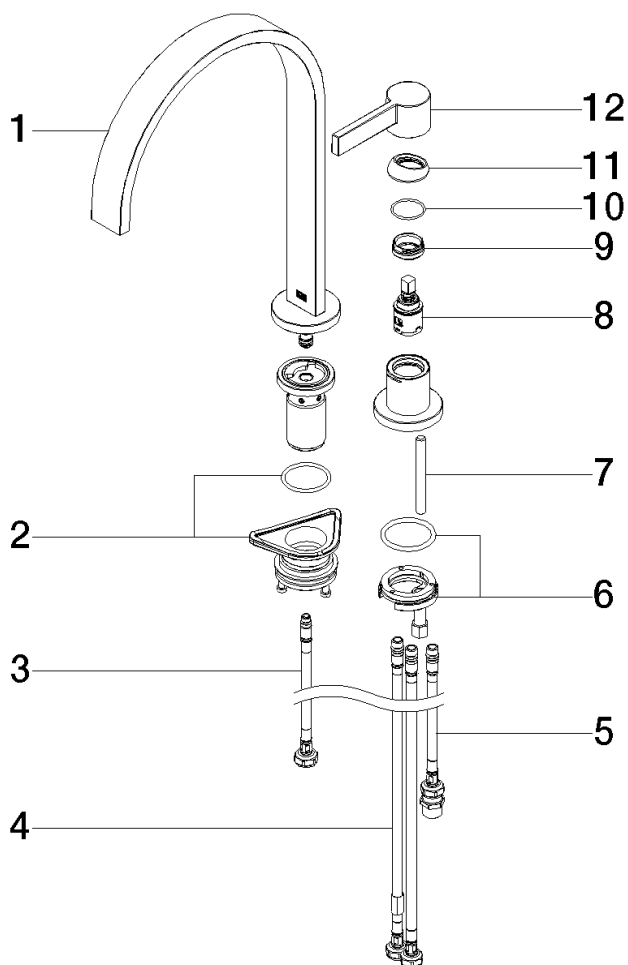
32 815 682 Product version from 3/1/2023

Certificates and sustainability

---

LGA\_38

WRAS\_240102



## Spare parts list

No.	Item Number	Name	Quantity used	Delivery time
1	90 28 22 390 00-08	spout	1.00	40
2	90 30 10 057 00 90	fixing set	1.00	2
7	09 31 11 011 90	pin	1.00	2
12	90 20 87 003 00-08	handle	1.00	40
3	04 30 04 100 00 90	hose	1.00	2
10	09 14 10 091 90	seal	1.00	2
5	04 30 04 104 00 90	hose	1.00	2
4	04 30 04 105 00 90	hose	2.00	2
8	90 15 05 042 00 90	cartridge	1.00	2
11	09 28 30 026-08	cover	1.00	40
6	04 30 11 085 97 90	fixing set	1.00	2
9	09 24 04 266 90	nut	1.00	2