

MEM Single-lever basin mixer with pop-up waste - Platinum

MEM

33 500 782 Product version from 3/10/2014 to 3/19/2019



- 165mm projection
- fixed spout
- rectangular, air-enriched flow
- height of mixer 310 mm
- height up to aerator 202 mm
- hole diameter 35 mm
- 2x screw-in M 10 x 1 pressure hose, leak-tested
- max. flow 5.7 l/min
- lead-free
- WRAS
- This product can help a building meet the requirements of Green Building Rating Systems, e.g. LEED®, BREEAM®, DGNB

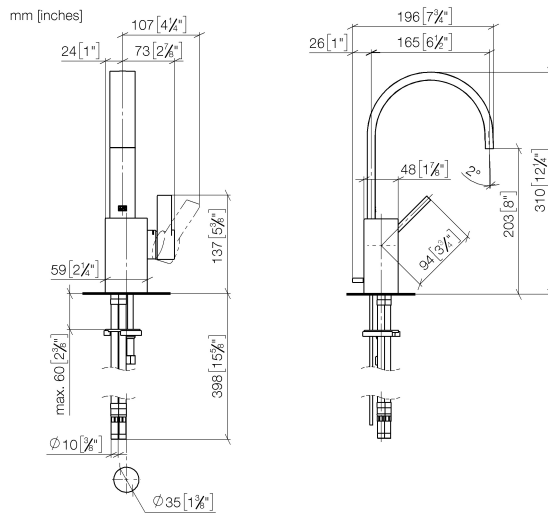
Only suitable for basins with an overflow.

	Platinum	33 500 782-08
	Chrome	33 500 782-00
	Brushed Platinum	33 500 782-06
	Dark Chrome	33 500 782-19
	Brushed Durabronze (23kt Gold)	33 500 782-28
	Brushed Champagne (22kt Gold)	33 500 782-46
	Champagne (22kt Gold)	33 500 782-47
	Brushed Dark Platinum	33 500 782-99

MEM Single-lever basin mixer with pop-up waste - Platinum

MEM

33 500 782 Product version from 3/10/2014 to 3/19/2019



Flow rate chart



Codes & Standards

DIN 4109	EN 817	Executive Order no. 1007	ISO 3822
Scottish Water Byelaws	UK Water Supply Regulations	Ü-Zeichen	VA-Zeichen



MEM Single-lever basin mixer with pop-up waste - Platinum

MEM

33 500 782 Product version from 3/10/2014 to 3/19/2019

Certificates and sustainability

ETA_18	LGA_28	GDV_0400	WRAS_240202
--------	--------	----------	-------------

MEM Single-lever basin mixer with pop-up waste - Platinum

MEM

33 500 782 Product version from 3/10/2014 to 3/19/2019

Parts for other
finishes can be found
here: [Chrome](#)





MEM Single-lever basin mixer with pop-up waste - Platinum

MEM

33 500 782 Product version from 3/10/2014 to 3/19/2019

Spare parts list

No.	Item Number	Name	Quantity used	Delivery time
9	09 20 78 057-08	handle	1.00	40
8	09 28 30 028-08	cover	1.00	40
13	09 14 10 042 90	seal	1.00	2
1	90 28 22 153 01-08	spout	1.00	40
18	09 14 10 132 90	seal	1.00	2
17	04 30 04 016 00 90	hose	2.00	60
16	09 24 04 290 90	nipple	1.00	2
21	09 31 11 012 90	pin	1.00	2
19	09 31 20 027 10-00	plug	1.00	10
20	04 30 11 038 75 90	fixing set	1.00	2
5	09 14 10 137 90	seal	1.00	2
14	09 24 04 289-08	nipple	1.00	40
2	09 20 78 032-08	handle	1.00	40
4	09 24 04 288 90	nut	1.00	2
3	90 15 05 042 00 90	cartridge	1.00	2
12	09 31 09 080-08	pull-rod	1.00	40
7	09 31 11 152 90	pin	1.00	2
15	09 14 10 166 90	seal	1.00	2
11	90 31 20 109 00 90	plug	1.00	2
22	90 11 01 001 00-08	pop-up waste	1.00	40
6	90 14 10 063 00 90	seal	1.00	2
10	90 31 11 063 00 90	pin	1.00	2