

MEM Single-lever basin mixer with pop-up waste - Brushed Platinum

MEM

33 501 782 Product version from 3/10/2014 to 3/19/2019

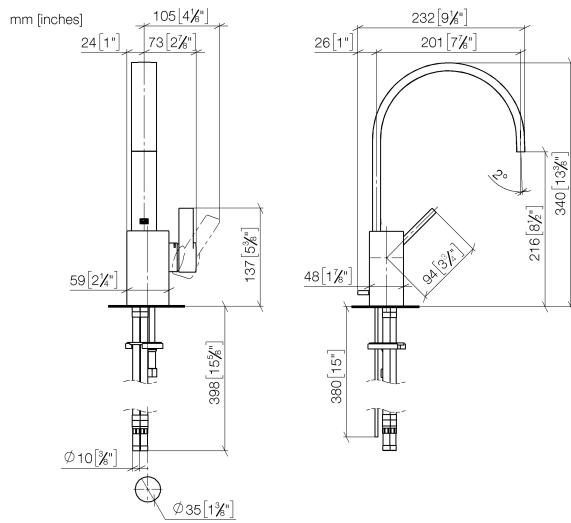


- 200mm projection
- fixed spout
- rectangular, air-enriched flow
- height of mixer 340 mm
- height up to aerator 216 mm
- hole diameter 35 mm
- 2x screw-in M 10 x 1 pressure hose, leak-tested
- max. flow 5.7 l/min
- lead-free
- WRAS
- This product can help a building meet the requirements of Green Building Rating Systems, e.g. LEED®, BREEAM®, DGNB

Only suitable for basins with an overflow.

| | | |
|---|--------------------------------|---------------|
|  | Brushed Platinum | 33 501 782-06 |
|  | Chrome | 33 501 782-00 |
|  | Platinum | 33 501 782-08 |
|  | Dark Chrome | 33 501 782-19 |
|  | Brushed Durabronze (23kt Gold) | 33 501 782-28 |
|  | Brushed Dark Brass | 33 501 782-39 |
|  | Brushed Champagne (22kt Gold) | 33 501 782-46 |
|  | Champagne (22kt Gold) | 33 501 782-47 |
|  | Brushed Dark Platinum | 33 501 782-99 |

33 501 782 Product version from 3/10/2014 to 3/19/2019



Flow rate chart



Codes & Standards

| | | | |
|---------------------------|--------------------------------|-----------------------------|------------|
| DIN 4109 | EN 817 | Executive Order no. 1007 | ISO 3822 |
| Scottish Water Byelaws | UK Water Supply Regulations | Ü-Zeichen | VA-Zeichen |



MEM Single-lever basin mixer with pop-up waste - Brushed Platinum

MEM

33 501 782 Product version from 3/10/2014 to 3/19/2019

Certificates and sustainability

| | | | |
|--------|--------|----------|-------------|
| ETA_18 | LGA_28 | GDV_0400 | WRAS_240202 |
|--------|--------|----------|-------------|

MEM Single-lever basin mixer with pop-up waste - Brushed Platinum

MEM

33 501 782 Product version from 3/10/2014 to 3/19/2019

Parts for other
finishes can be found
here: [Chrome](#)





MEM Single-lever basin mixer with pop-up waste - Brushed Platinum

MEM

33 501 782 Product version from 3/10/2014 to 3/19/2019

Spare parts list

| No. | Item Number | Name | Quantity used | Delivery time |
|-----|--------------------|--------------|---------------|---------------|
| 2 | 09 20 78 032-06 | handle | 1.00 | 10 |
| 13 | 09 14 10 042 90 | seal | 1.00 | 2 |
| 9 | 09 20 78 057-06 | handle | 1.00 | 10 |
| 5 | 09 14 10 137 90 | seal | 1.00 | 2 |
| 20 | 04 30 11 038 75 90 | fixing set | 1.00 | 2 |
| 18 | 09 14 10 132 90 | seal | 1.00 | 2 |
| 12 | 09 31 09 080-06 | pull-rod | 1.00 | 10 |
| 14 | 09 24 04 289-06 | nipple | 1.00 | 10 |
| 21 | 09 31 11 012 90 | pin | 1.00 | 2 |
| 19 | 09 31 20 027 10-00 | plug | 1.00 | 10 |
| 4 | 09 24 04 288 90 | nut | 1.00 | 2 |
| 1 | 90 28 22 152 01-06 | spout | 1.00 | 10 |
| 16 | 09 24 04 290 90 | nipple | 1.00 | 2 |
| 17 | 04 30 04 104 00 90 | hose | 2.00 | 2 |
| 7 | 09 31 11 152 90 | pin | 1.00 | 2 |
| 15 | 09 14 10 166 90 | seal | 1.00 | 2 |
| 8 | 09 28 30 028-06 | cover | 1.00 | 10 |
| 3 | 90 15 05 042 00 90 | cartridge | 1.00 | 2 |
| 10 | 90 31 11 063 00 90 | pin | 1.00 | 2 |
| 11 | 90 31 20 109 00 90 | plug | 1.00 | 2 |
| 22 | 90 11 01 001 00-06 | pop-up waste | 1.00 | 10 |
| 6 | 90 14 10 063 00 90 | seal | 1.00 | 2 |