

## LISSÉ Single-lever basin mixer with raised base with pop-up waste - Brushed Light Gold








LISSÉ

33 506 845 Product version from 5/1/2021



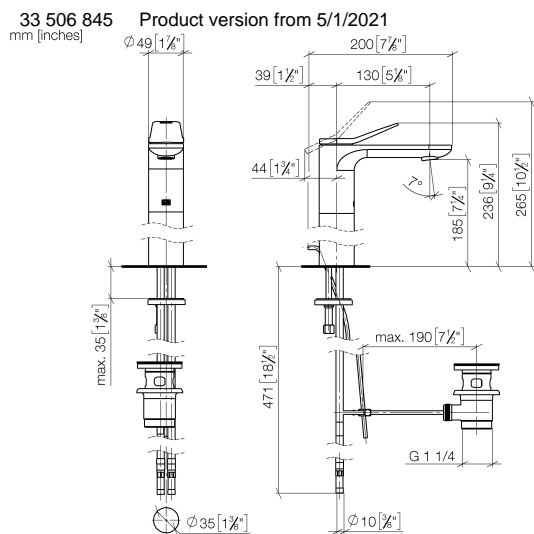
- 130mm projection
- fixed spout
- circular, air-enriched flow
- height of mixer 236 mm
- height up to aerator 185 mm
- hole diameter 35 mm
- 2x screw-in M 8 x 1 pressure hose, leak-tested
- max. flow 5.7 l/min
- lead-free
- This product can help a building meet the requirements of Green Building Rating Systems, e.g. LEED®, BREEAM®, DGNB
- WRAS

Only suitable for basins with an overflow.

	Brushed Light Gold	33 506 845-27
	Chrome	33 506 845-00
	Brushed Platinum	33 506 845-06
	Dark Chrome	33 506 845-19
	Matte Black	33 506 845-33
	Brushed Chrome	33 506 845-93
	Brushed Dark Platinum	33 506 845-99

# LISSE Single-lever basin mixer with raised base with pop-up waste - Brushed Light Gold

LISSE



Flow rate chart



## Codes & Standards

DIN 4109

Executive Order  
no. 1007

ISO 3822

Scottish Water  
Byelaws

UK Water Supply  
Regulations

Ü-Zeichen



## LISSE Single-lever basin mixer with raised base with pop-up waste - Brushed Light Gold

---

LISSE

33 506 845 Product version from 5/1/2021

Certificates and sustainability

---

LGA\_29

GDV\_0400

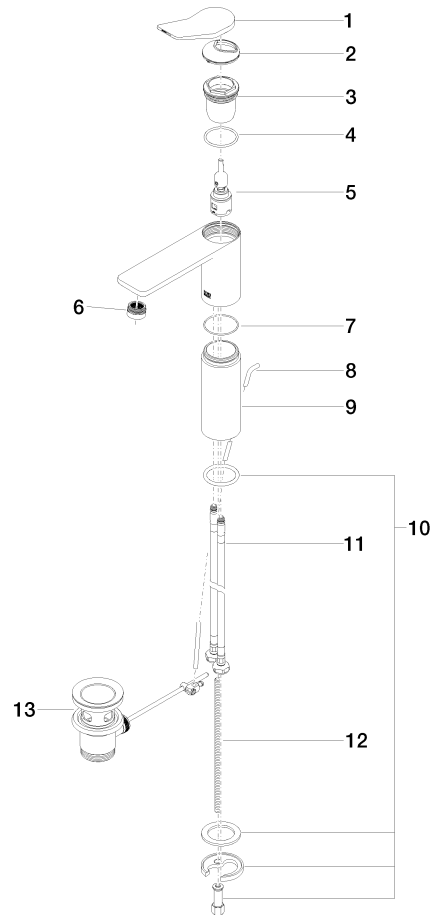
WRAS\_250402

## LISSÉ Single-lever basin mixer with raised base with pop-up waste - Brushed Light Gold

LISSÉ

33 506 845 Product version from 5/1/2021

Parts for other  
finishes can be found  
here: [Chrome](#)



### Spare parts list

No.	Item Number	Name	Quantity used	Delivery time
	12 09 31 11 000 90	pin	1.00	2
	4 09 14 10 038 90	seal	1.00	2
	5 90 15 05 042 01 90	cartridge	1.00	2
	10 04 30 11 038 75 90	fixing set	1.00	2
	6 90 23 01 161 01-27	aerator	1.00	20
	7 09 14 10 108 90	seal	1.00	2
	8 09 31 09 120-27	pull-rod	1.00	60
	13 90 11 01 001 00-27	pop-up waste	1.00	20
	9 09 28 22 305-27	sleeve	1.00	60
	1 90 20 84 020 00-27	handle	1.00	20
	2 09 28 30 034 90	cover	1.00	2
	3 09 23 10 123 90	nut	1.00	2
	11 04 30 04 101 00 90	hose	2.00	2