

## MEM Single-lever basin mixer without pop-up waste - Platinum

MEM

33 526 782 Product version from 3/10/2014 to 3/19/2019



- 200mm projection
- fixed spout
- rectangular, air-enriched flow
- height of mixer 340 mm
- height up to aerator 216 mm
- hole diameter 35 mm
- 2x screw-in M 10 x 1 pressure hose, leak-tested
- max. flow 5.7 l/min
- lead-free
- WRAS
- This product can help a building meet the requirements of Green Building Rating Systems, e.g. LEED®, BREEAM®, DGNB

	Platinum	33 526 782-08
	Chrome	33 526 782-00
	Brushed Platinum	33 526 782-06
	Dark Chrome	33 526 782-19
	Brushed Durabronze (23kt Gold)	33 526 782-28
	Brushed Dark Brass	33 526 782-39
	Brushed Champagne (22kt Gold)	33 526 782-46
	Champagne (22kt Gold)	33 526 782-47
	Brushed Dark Platinum	33 526 782-99

33 526 782 Product version from 3/10/2014 to 3/19/2019



### Flow rate chart



### Codes & Standards

DIN 4109

EN 817

Executive Order  
no. 1007

ISO 3822

Scottish Water  
Byelaws

UK Water Supply  
Regulations

Ü-Zeichen

VA-Zeichen



MEM Single-lever basin mixer without pop-up waste - Platinum

MEM

33 526 782    Product version from 3/10/2014 to 3/19/2019

Certificates and sustainability

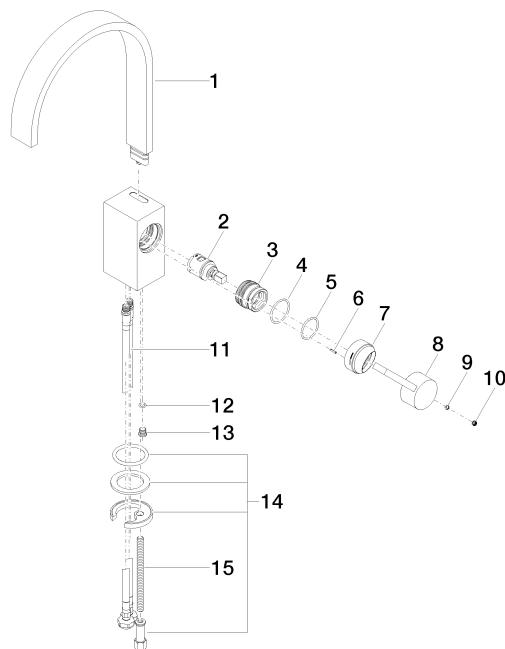
ETA_18	LGA_28	GDV_0400	WRAS_240202
--------	--------	----------	-------------

## MEM Single-lever basin mixer without pop-up waste - Platinum

MEM

33 526 782 Product version from 3/10/2014 to 3/19/2019

Parts for other  
finishes can be found  
here: [Chrome](#)



### Spare parts list

No.	Item Number	Name	Quantity used	Delivery time
6	09 31 11 152 90	pin	1.00	2
7	09 28 30 028-08	cover	1.00	40
15	09 31 11 012 90	pin	1.00	2
8	09 20 78 057-08	handle	1.00	40
11	04 30 04 104 00 90	hose	2.00	2
4	09 14 10 137 90	seal	1.00	2
1	90 28 22 152 01-08	spout	1.00	40
13	09 31 20 027 10-00	plug	1.00	10
3	09 24 04 288 90	nut	1.00	2
12	09 14 10 132 90	seal	1.00	2
2	90 15 05 042 00 90	cartridge	1.00	2
14	04 30 11 038 75 90	fixing set	1.00	2
5	90 14 10 063 00 90	seal	1.00	2
9	90 31 11 063 00 90	pin	1.00	2
10	90 31 20 109 00 90	plug	1.00	2