

MEM Single-lever basin mixer without pop-up waste - Champagne (22kt Gold)

MEM

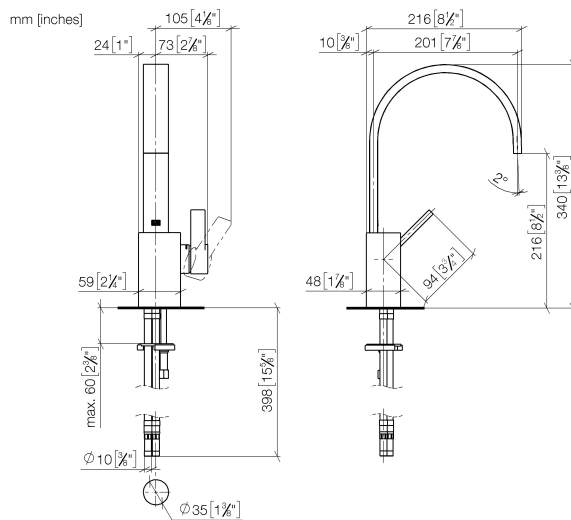
33 526 782 Product version from 5/5/2021



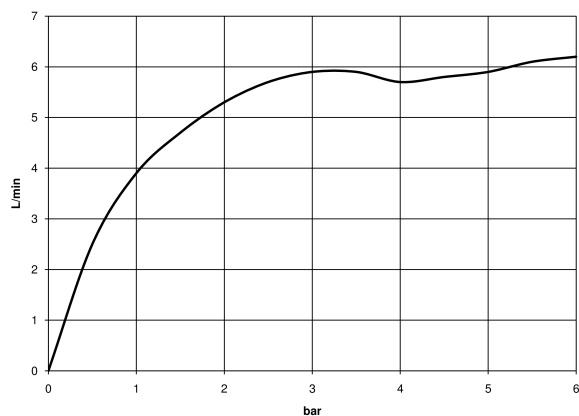
- 200mm projection
- fixed spout
- rectangular, air-enriched flow
- height of mixer 340 mm
- height up to aerator 216 mm
- hole diameter 35 mm
- 2x screw-in M 10 x 1 pressure hose, leak-tested
- max. flow 5.7 l/min
- lead-free
- WRAS
- This product can help a building meet the requirements of Green Building Rating Systems, e.g. LEED®, BREEAM®, DGNB

	Champagne (22kt Gold)	33 526 782-47
	Chrome	33 526 782-00
	Brushed Platinum	33 526 782-06
	Platinum	33 526 782-08
	Dark Chrome	33 526 782-19
	Brushed Durabronze (23kt Gold)	33 526 782-28
	Brushed Dark Brass	33 526 782-39
	Brushed Champagne (22kt Gold)	33 526 782-46
	Brushed Dark Platinum	33 526 782-99

33 526 782 Product version from 5/5/2021



Flow rate chart



Codes & Standards

DIN 4109

EN 817

Executive Order
no. 1007

ISO 3822

Scottish Water
Byelaws

UK Water Supply
Regulations

Ü-Zeichen

VA-Zeichen



MEM Single-lever basin mixer without pop-up waste - Champagne (22kt Gold)

MEM

33 526 782 Product version from 5/5/2021

Certificates and sustainability

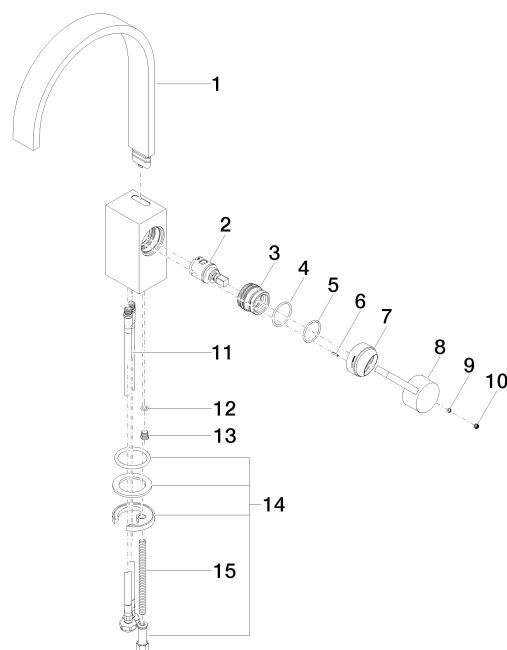
ETA_18	LGA_28	GDV_0400	WRAS_240202
--------	--------	----------	-------------

MEM Single-lever basin mixer without pop-up waste - Champagne (22kt Gold)

MEM

33 526 782 Product version from 5/5/2021

Parts for other
finishes can be found
here: [Chrome](#)



Spare parts list

No.	Item Number	Name	Quantity used	Delivery time
	15 09 31 11 012 90	pin	1.00	2
	11 04 30 04 104 00 90	hose	2.00	2
	14 04 30 11 038 75 90	fixing set	1.00	2
	3 09 24 04 288 90	nut	1.00	2
	1 90 28 22 152 01-47	spout	1.00	30
	2 90 15 05 042 00 90	cartridge	1.00	2
	4 09 14 10 137 90	seal	1.00	2
	7 09 28 30 028-47	cover	1.00	30
	12 09 14 10 132 90	seal	1.00	2
	6 09 31 11 152 90	pin	1.00	2
	8 09 20 78 057-47	handle	1.00	30
	13 09 31 20 027 10-00	plug	1.00	10
	5 90 14 10 063 00 90	seal	1.00	2
	10 90 31 20 109 00 90	plug	1.00	2
	9 90 31 11 063 00 90	pin	1.00	2