

VAIA Single-lever basin mixer with raised base without pop-up waste - Champagne (22kt Gold)

VAIA

33 534 809 Product version from 3/13/2017



- 201mm projection
- pivotable spout 360°
- circular, air-enriched flow
- height of mixer 414 mm
- height up to aerator 316 mm
- hole diameter 35 mm
- max. flow 5.7 l/min
- 2x screw-in M 8 x 1 pressure hose, leak-tested
- This product can help a building meet the requirements of Green Building Rating Systems, e.g. LEED®, BREEAM®, DGNB
- lead-free
- WRAS

for use on countertop bowls

| | | |
|--|--------------------------------|---------------|
|  | Champagne (22kt Gold) | 33 534 809-47 |
|  | Chrome | 33 534 809-00 |
|  | Brushed Platinum | 33 534 809-06 |
|  | Platinum | 33 534 809-08 |
|  | Dark Chrome | 33 534 809-19 |
|  | Brushed Durabronze (23kt Gold) | 33 534 809-28 |
|  | Brushed Dark Brass | 33 534 809-39 |
|  | Brushed Bronze | 33 534 809-42 |
|  | Brushed Champagne (22kt Gold) | 33 534 809-46 |
|  | Brushed Dark Platinum | 33 534 809-99 |

VAIA Single-lever basin mixer with raised base without pop-up waste - Champagne (22kt Gold)

VAIA

33 534 809 Product version from 3/13/2017
mm [inches]



Flow rate chart



Codes & Standards

DIN 4109

Executive Order
no. 1007

ISO 3822

Scottish Water
Byelaws

UK Water Supply
Regulations

Ü-Zeichen



VAIA Single-lever basin mixer with raised base without pop-up waste -
Champagne (22kt Gold)

VAIA

33 534 809 Product version from 3/13/2017

Certificates and sustainability

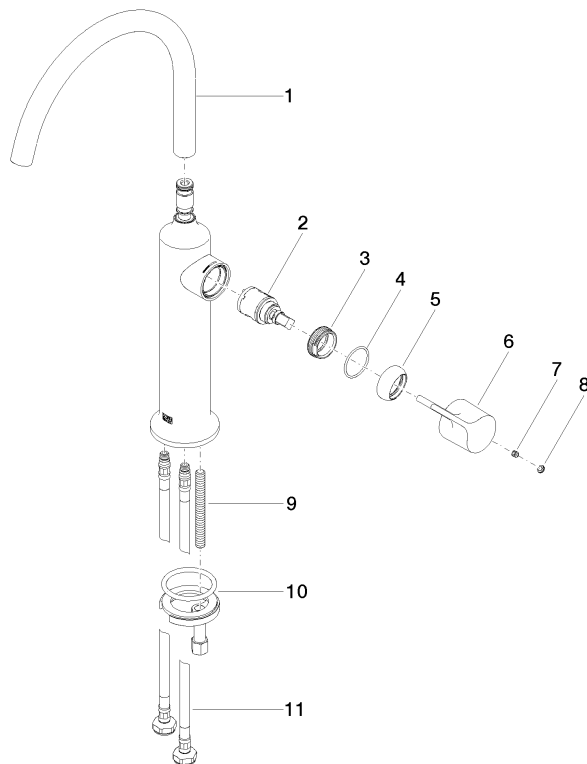
| | | |
|--------|----------|-------------|
| LGA_29 | GDV_0400 | WRAS_240702 |
|--------|----------|-------------|

VAIA Single-lever basin mixer with raised base without pop-up waste - Champagne (22kt Gold)

VAIA

33 534 809 Product version from 3/13/2017

Parts for other
finishes can be found
here: [Chrome](#)



Spare parts list

| No. | Item Number | Name | Quantity used | Delivery time |
|-----|--------------------|------------|---------------|---------------|
| 3 | 09 24 04 266 90 | nut | 1.00 | 2 |
| 10 | 04 30 11 038 00 90 | fixing set | 1.00 | 2 |
| 2 | 90 15 05 042 00 90 | cartridge | 1.00 | 2 |
| 6 | 09 20 80 020-47 | handle | 1.00 | 60 |
| 11 | 04 30 04 100 00 90 | hose | 2.00 | 2 |
| 1 | 90 28 22 313 00-47 | spout | 1.00 | 30 |
| 8 | 90 31 20 087 00-47 | plug | 1.00 | 30 |
| 9 | 09 31 11 011 90 | pin | 1.00 | 2 |
| 4 | 09 14 10 091 90 | seal | 1.00 | 2 |
| 5 | 09 28 30 021-47 | cover | 1.00 | 60 |
| 7 | 90 31 11 030 00 90 | pin | 1.00 | 2 |