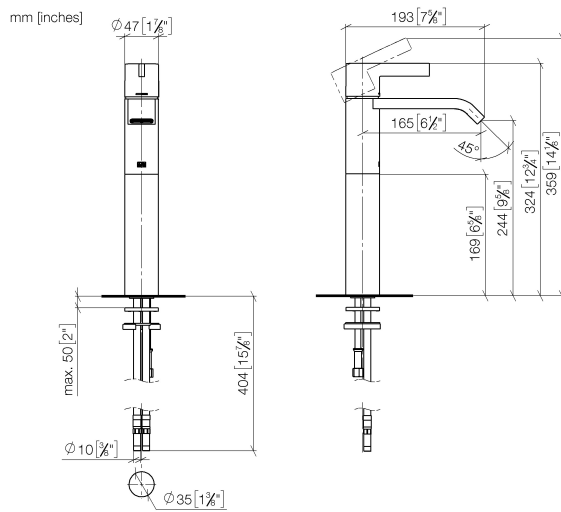




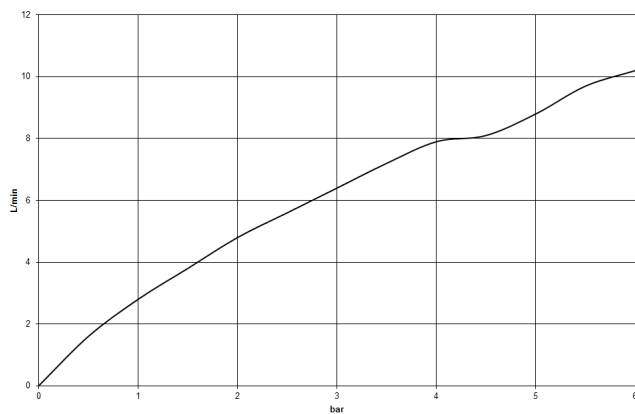
- 165mm projection
- fixed spout
- rectangular, air-enriched flow
- height of mixer 358 mm
- height up to aerator 247 mm
- hole diameter 35 mm
- 2x screw-in M 10 x 1 pressure hose, leak-tested
- max. flow 7 l/min
- lead-free
- This product can help a building meet the requirements of Green Building Rating Systems, e.g. LEED®, BREEAM®, DGNB

for use on countertop bowls

33 537 670 Product version up to 10/10/2018



**Flow rate chart**



**Codes & Standards**

DIN 4109

EN 817

Executive Order  
no. 1007

ISO 3822

Ü-Zeichen

VA-Zeichen



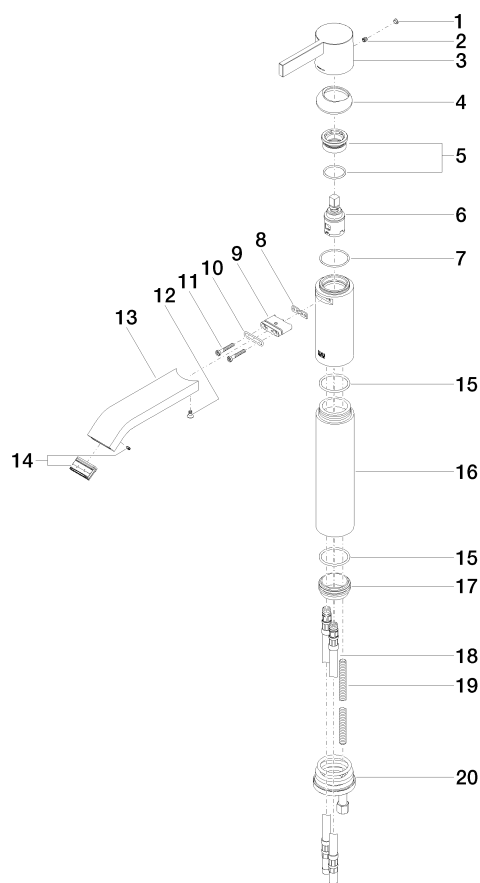
IMO Single-lever basin mixer with raised base without pop-up waste - Chrome

IMO

33 537 670 Product version up to 10/10/2018

Certificates and sustainability

ETA_19	LGA_19	GDV_0400
--------	--------	----------



## Spare parts list

No.	Item Number	Name	Quantity used	Delivery time
15	09 14 10 119 90	seal	1.00	2
3	09 20 67 003-00	handle	1.00	10
13	09 28 22 240-00	spout	1.00	10
17	09 28 10 109-07	ring	1.00	30
1	90 31 20 087 00-00	plug	1.00	10
11	09 30 30 084 90	screw	2.00	2
10	09 14 10 053 90	seal	1.00	2
8	09 14 03 131 90	seal	1.00	2
20	04 30 11 085 88 90	fixing set	1.00	2
16	09 28 22 244 20-00	pipe	1.00	10
7	09 14 10 102 90	seal	1.00	2
19	09 31 11 095 90	pin	1.00	2
9	09 11 03 061 90	connection	1.00	2
18	04 30 04 017 00 90	hose	2.00	60
14	90 29 03 045 00 90	aerator	1.00	2
4	09 28 30 019-00	cover	1.00	10
6	90 15 05 042 00 90	cartridge	1.00	2
12	09 30 30 116 90	screw	1.00	2
5	90 23 10 066 00 90	nut	1.00	2
2	90 31 11 030 00 90	pin	1.00	2