

## ENO Single-lever mixer Pull-out - Chrome

ENO

33 840 760



- 220mm projection
- pivotable spout 130°
- air-enriched flow
- height of mixer 167 mm
- height up to aerator 145 mm
- hole diameter 35 mm
- fabric braided hose 1500 mm
- max. flow 8 l/min at 3 bar flow pressure
- lead-free
- This product can help a building meet the requirements of Green Building Rating Systems, e.g. LEED®, BREEAM®, DGNB

Intrinsic protection against back flow.

	Chrome	33 840 760-00
	Brushed Platinum	33 840 760-06
	Platinum	33 840 760-08
	Dark Chrome	33 840 760-19
	Brushed Durabronze (23kt Gold)	33 840 760-28
	Brushed Champagne (22kt Gold)	33 840 760-46
	Champagne (22kt Gold)	33 840 760-47
	Brushed Chrome	33 840 760-93
	Brushed Dark Platinum	33 840 760-99

### Recommended miscellaneous

**Strainer waste with control handle - Chrome** 10 712 970-00

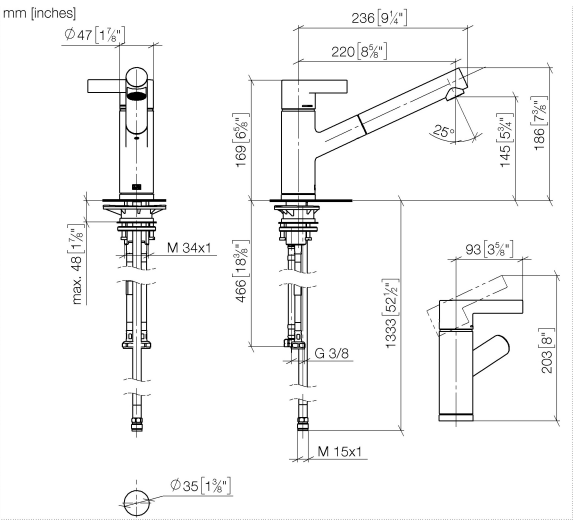


### Recommended miscellaneous

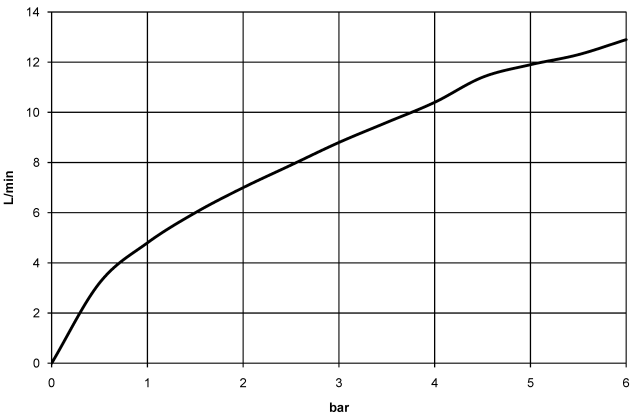
**Dispenser without rosette - Chrome** 82 424 970-00



33 840 760



Flow rate chart



Codes & Standards

DIN 4109	EN 1717	EN 817	Executive Order no. 1007
ISO 3822	Ü-Zeichen	VA-Zeichen	



## ENO Single-lever mixer Pull-out - Chrome

ENO

33 840 760

### Certificates

Belgaqua\_22\_277\_2 ETA\_20

GDV\_0400

LGA\_19

## ENO Single-lever mixer Pull-out - Chrome

ENO

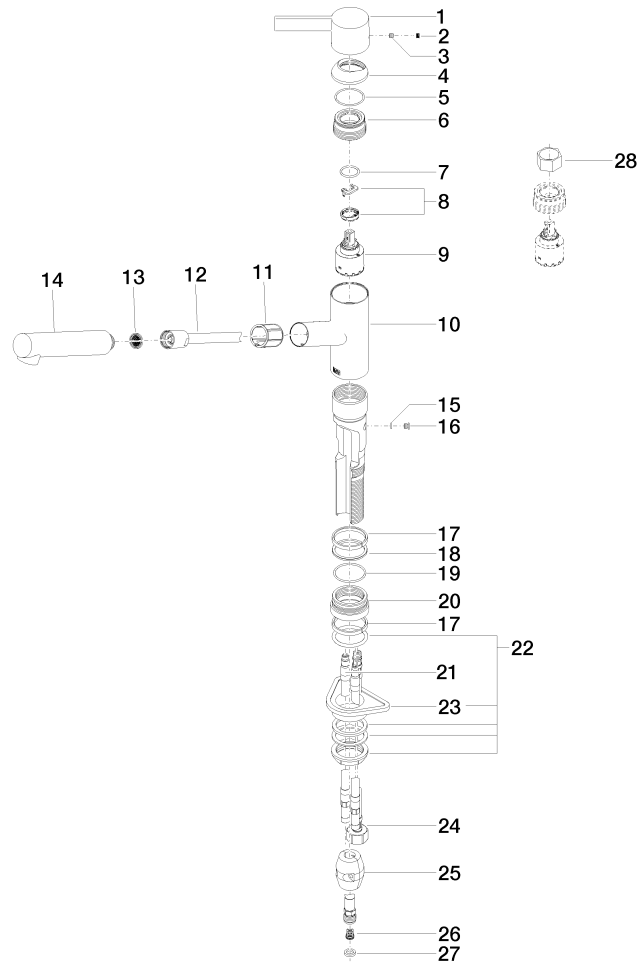
33 840 760

Product version up to 12/31/2013

Product version from 12/31/2013 to 3/5/2020

Product version from 3/5/2020 to 5/7/2021

**Product version from 5/7/2021**





## ENO Single-lever mixer Pull-out - Chrome

ENO

33 840 760

### Spare parts list

Product version up to 12/31/2013

Product version from 12/31/2013 to 3/5/2020

Product version from 3/5/2020 to 5/7/2021

### Product version from 5/7/2021

No.	Item Number	Name	Quantity used	Delivery time
	09 20 76 001-00	handle	30	10