

## SYNC Profi single-lever mixer - Brushed Durabronze (23kt Gold)

SYNC

33 865 895 Product version from 5/20/2021



- 200mm projection
- Flexible silicone hose with large operating range of up to 350 mm
- pivotable spout 360°
- Optional swivel limiter available with swivel limiter set 12 821 970 90
- This product can help a building meet the requirements of Green Building Rating Systems, e.g. LEED®, BREEAM®, DGNB
- air-enriched flow and spray flow
- height of mixer 451 mm
- height up to aerator 119 mm
- hole diameter 35 mm
- sprayface with anti-scaling system
- max. flow 9.5 l/min at 3 bar flow pressure
- lead-free

Intrinsic protection against back flow.

|  |                                |               |
|--|--------------------------------|---------------|
|  | Brushed Durabronze (23kt Gold) | 33 865 895-28 |
|  | Chrome                         | 33 865 895-00 |
|  | Brushed Platinum               | 33 865 895-06 |
|  | Platinum                       | 33 865 895-08 |
|  | Durabronze (23kt Gold)         | 33 865 895-09 |
|  | Dark Chrome                    | 33 865 895-19 |
|  | Matte Black                    | 33 865 895-33 |
|  | Brushed Bronze                 | 33 865 895-42 |
|  | Brushed Champagne (22kt Gold)  | 33 865 895-46 |
|  | Champagne (22kt Gold)          | 33 865 895-47 |
|  | Brushed Chrome                 | 33 865 895-93 |
|  | Brushed Dark Platinum          | 33 865 895-99 |

### Recommended miscellaneous

**Swivel limitation set -**

12 821 970 90



### Recommended miscellaneous

**Dispenser without rosette -  
Brushed Durabronze (23kt Gold)**

82 424 970-28

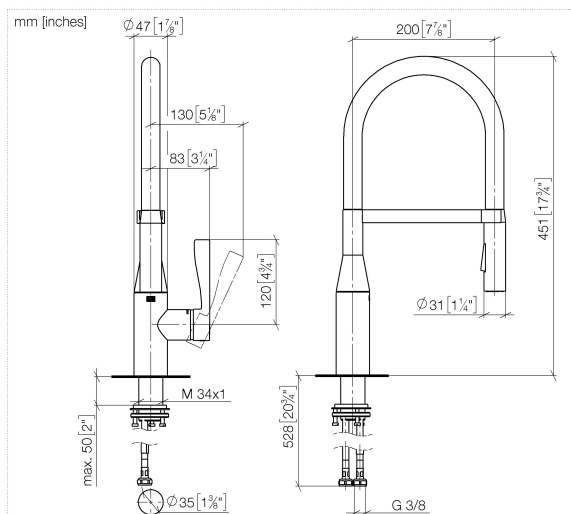


### Recommended miscellaneous

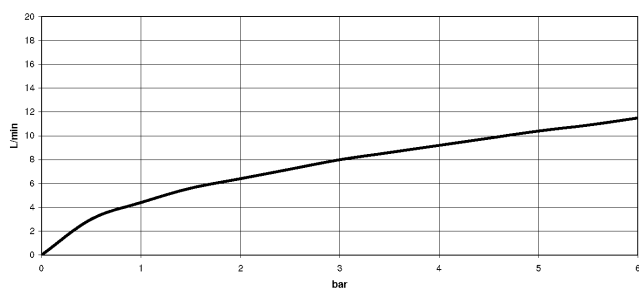
**Strainer waste with control handle  
- Brushed Durabronze (23kt Gold)**

10 712 970-28





Flow rate chart



## Codes & Standards

DIN 4109

EN 1717

ISO 3822

Ü-Zeichen



## SYNC Profi single-lever mixer - Brushed Durabronz (23kt Gold)

---

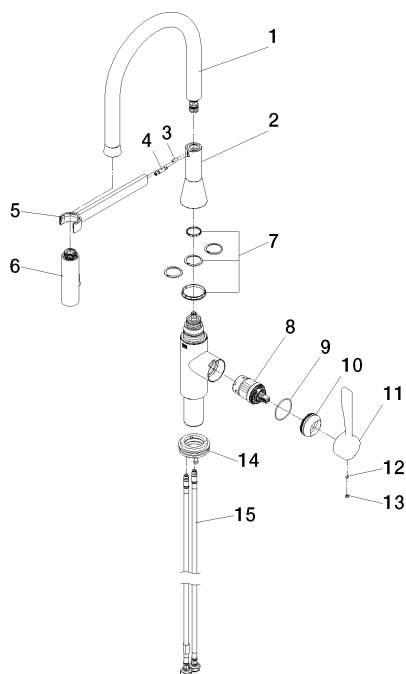
SYNC

33 865 895 Product version from 5/20/2021

### Certificates and sustainability

---

Belgaqua\_21-027-2 LGA\_29



## Spare parts list

| No.  | Item Number        | Name                    | Quantity used | Delivery time |
|--|--------------------|-------------------------|---------------|---------------|
| 1  | 90 30 02 100 00-28 | hose                    | 1.00          | 20            |
| 14   | 04 30 11 040 00 90 | fixing set              | 1.00          | 2             |
| 15   | 04 30 04 101 00 90 | hose                    | 2.00          | 2             |
| 11   | 09 20 89 020-28    | handle                  | 1.00          | 20            |
| 6  | 04 12 11 150 00 90 | shower                  | 1.00          | 2             |
| 9  | 09 14 10 190 90    | seal                    | 1.00          | 2             |
| 5  | 90 17 20 045 00-28 | holder                  | 1.00          | 20            |
| 8  | 90 15 05 064 05 90 | cartridge               | 1.00          | 2             |
| 12   | 90 31 11 063 00 90 | pin                     | 1.00          | 2             |
| 7  | 12 821 970 90      | Swivel limitation set - | 1.00          | 2             |
| 2  | 90 17 97 063 00-28 | base                    | 1.00          | -             |
| Spare part can no longer be ordered, please order the replacement item |                    |                         |               |               |
| 4  | 09 31 11 209 90    | pin                     | 1.00          | 2             |
| 10   | 09 28 30 030-28    | cover                   | 1.00          | 20            |
| 13   | 90 31 20 087 00-28 | plug                    | 1.00          | 20            |
| 3  | 09 31 11 040 90    | pin                     | 1.00          | 2             |