

META SQUARE Single-lever mixer Pull-down with spray function - Brushed Durabronze (23kt Gold)

META SQUARE

33 870 861 Product version from 2/1/2023 to 10/30/2024



- 240mm projection
- pivotable spout 360°
- Optional swivel limiter available with swivel limiter set 12 823 970 90
- laminar and spray flow
- 1800 mm metal shower hose
- sprayface with anti-scaling system
- max. flow 10.4 l/min at 3 bar flow pressure
- lead-free
- Flow modes can be changed while the water is running
- This product can help a building meet the requirements of Green Building Rating Systems, e.g. LEED®, BREEAM®, DGNB

Intrinsic protection against back flow.

| | | |
|---|--------------------------------------|---------------|
|  | Brushed Durabronze (23kt Gold) | 33 870 861-28 |
|  | Chrome | 33 870 861-00 |
|  | Brushed Platinum | 33 870 861-06 |
|  | Platinum | 33 870 861-08 |
|  | Durabronze (23kt Gold) | 33 870 861-09 |
|  | Dark Chrome | 33 870 861-19 |
|  | Matte Black | 33 870 861-33 |
|  | Brushed Bronze | 33 870 861-42 |
|  | Brushed Champagne (22kt Gold) | 33 870 861-46 |
|  | Champagne (22kt Gold) | 33 870 861-47 |
|  | Brushed Chrome | 33 870 861-93 |
|  | Brushed Dark Platinum | 33 870 861-99 |

Recommended miscellaneous



Swivel limitation set -

12 823 970 90

Recommended miscellaneous



Strainer waste with control handle 10 712 970-28
- Brushed Durabrass (23kt Gold)

Recommended miscellaneous



**Dispenser without rosette -
Brushed Durabrass (23kt Gold)**

82 424 970-28

META SQUARE Single-lever mixer Pull-down with spray function - Brushed Durabron (23kt Gold)

META SQUARE

33 870 861 Product version from 2/1/2023 to 10/30/2024

mm [inches]

1:5



Flow rate chart



Codes & Standards

DIN 4109

EN 1717

ISO 3822

Ü-Zeichen



META SQUARE Single-lever mixer Pull-down with spray function - Brushed
Durabrass (23kt Gold)

META SQUARE

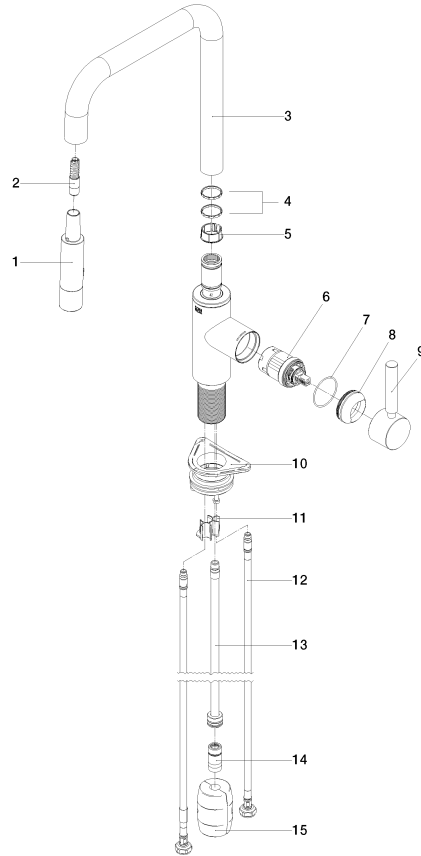
33 870 861 Product version from 2/1/2023 to 10/30/2024

Certificates and sustainability

LGA_38

Belgaqua_24-005-2

33 870 861 Product version from 2/1/2023 to 10/30/2024



Spare parts list

| No. | Item Number | Name | Quantity used | Delivery time |
|-----|--------------------|-------------|---------------|---------------|
| 5 | 09 18 40 186 90 | sleeve | 1.00 | 2 |
| 3 | 90 28 22 308 00-28 | spout | 1.00 | 20 |
| 9 | 90 20 66 027 00-28 | handle | 1.00 | 20 |
| 1 | 90 12 11 148 00-28 | shower | 1.00 | 60 |
| 14 | 90 24 03 253 00 90 | adaptor | 1.00 | 2 |
| 12 | 04 30 04 100 00 90 | hose | 2.00 | 2 |
| 13 | 04 28 20 067 00 90 | pipe | 1.00 | 2 |
| 15 | 04 21 50 010 00 90 | accessories | 1.00 | 2 |
| 11 | 09 20 93 056 90 | insert | 1.00 | 2 |
| 8 | 09 28 30 030-28 | cover | 1.00 | 20 |
| 10 | 04 30 11 040 00 90 | fixing set | 1.00 | 2 |
| 4 | 09 28 10 160 90 | ring | 2.00 | 2 |
| 6 | 90 15 05 064 05 90 | cartridge | 1.00 | 2 |
| 7 | 09 14 10 190 90 | seal | 1.00 | 2 |
| 2 | 04 30 02 120 00-28 | hose | 1.00 | - |

Spare part can no longer be ordered, please order the replacement item