

TARA Single-lever mixer Pull-down with spray function - Brushed Chrome

TARA

33 870 888 Product version from 2/1/2023 to 10/30/2024



- 240mm projection
- pivotable spout 360°
- Optional swivel limiter available with swivel limiter set 12 823 970 90
- laminar and spray flow
- 1800 mm metal shower hose
- sprayface with anti-scaling system
- max. flow 10.4 l/min at 3 bar flow pressure
- lead-free
- Flow modes can be changed while the water is running
- This product can help a building meet the requirements of Green Building Rating Systems, e.g. LEED®, BREEAM®, DGNB

Intrinsic protection against back flow.

	Brushed Chrome	33 870 888-93
	Chrome	33 870 888-00
	Brushed Platinum	33 870 888-06
	Platinum	33 870 888-08
	Durabrand (23kt Gold)	33 870 888-09
	Dark Chrome	33 870 888-19
	Brushed Durabrand (23kt Gold)	33 870 888-28
	Matte Black	33 870 888-33
	Brushed Bronze	33 870 888-42
	Brushed Champagne (22kt Gold)	33 870 888-46
	Champagne (22kt Gold)	33 870 888-47
	Brushed Dark Platinum	33 870 888-99

Recommended miscellaneous

Swivel limitation set -

12 823 970 90



Recommended miscellaneous

Strainer waste with control handle - Brushed Chrome



Recommended miscellaneous

Dispenser with rosette - Brushed Chrome

82 444 970-93



TARA Single-lever mixer Pull-down with spray function - Brushed Chrome

TARA

33 870 888 Product version from 2/1/2023 to 10/30/2024



Flow rate chart



Codes & Standards

DIN 4109

EN 1717

ISO 3822

Ü-Zeichen



TARA Single-lever mixer Pull-down with spray function - Brushed Chrome

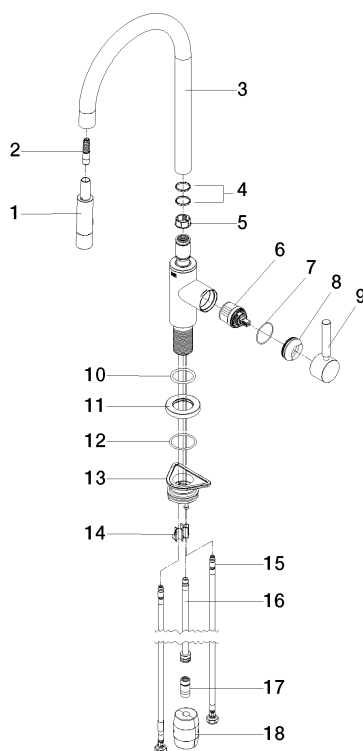
TARA

33 870 888 Product version from 2/1/2023 to 10/30/2024

Certificates and sustainability

LGA_38

Belgaqua_24-005-2



Spare parts list

No.	Item Number	Name	Quantity used	Delivery time
2	04 30 02 120 00-85	hose	1.00	10
3	90 28 22 304 00-93	spout	1.00	20
4	09 28 10 160 90	ring	2.00	2
5	09 18 40 186 90	sleeve	1.00	2
16	04 28 20 067 00 90	pipe	1.00	2
10	09 14 10 036 90	seal	1.00	2
11	90 27 22 047 00-93	rosette	1.00	-
Spare part can no longer be ordered, please order the replacement item				
14	09 20 93 056 90	insert	1.00	2
15	04 30 04 101 00 90	hose	2.00	2
17	90 24 03 253 00 90	adaptor	1.00	2
7	09 14 10 190 90	seal	1.00	2
9	90 20 66 027 00-93	handle	1.00	20
1	90 12 11 148 00-93	shower	1.00	60
18	04 21 50 010 00 90	accessories	1.00	2
13	04 30 11 040 00 90	fixing set	1.00	2
8	09 28 30 030-93	cover	1.00	60
12	09 14 10 050 90	seal	1.00	2
6	90 15 05 064 05 90	cartridge	1.00	2