

Concealed wall elbow -

35 085 970 90



- red brass, lead-free
 - female thread 1/2" connection
 - 1x female thread 1/2" outlet
 - dust cover
 - anti-water packing
 - soundproofing
 - WRAS 240502014, 1904021
- For wall-mounted spouts and wall outlet elbows with 1/2" connection.**

For wall-mounted spouts and wall outlet elbows with 1/2" connection.

Required miscellaneous



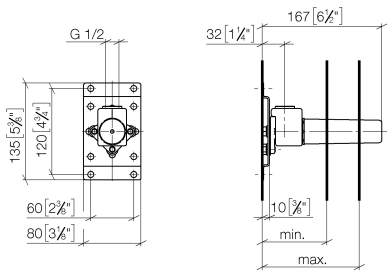
- Drybox Concealed thermostat - XS-09 0728**
- Overflow is part of the scope of delivery.



Concealed wall elbow -

35 085 970 90

mm [inches]



	min.	max.
CL. 1	90 [3 1/2"]	163 [6 3/8"]
CL. 2	68 [2 5/8"]	135 [5 3/8"]
Domicil	90 [3 1/2"]	163 [6 3/8"]
Gentle	90 [3 1/2"]	163 [6 3/8"]
IMO	90 [3 1/2"]	163 [6 3/8"]
Lissé	90 [3 1/2"]	163 [6 3/8"]
MEM	90 [3 1/2"]	163 [6 3/8"]
Symetrics	90 [3 1/2"]	163 [6 3/8"]
Vaia	90 [3 1/2"]	163 [6 3/8"]

Codes & Standards

DIN 4109	ISO 3822	Scottish Water Byelaws	UK Water Supply Regulations
----------	----------	---------------------------	--------------------------------

Ü-Zeichen

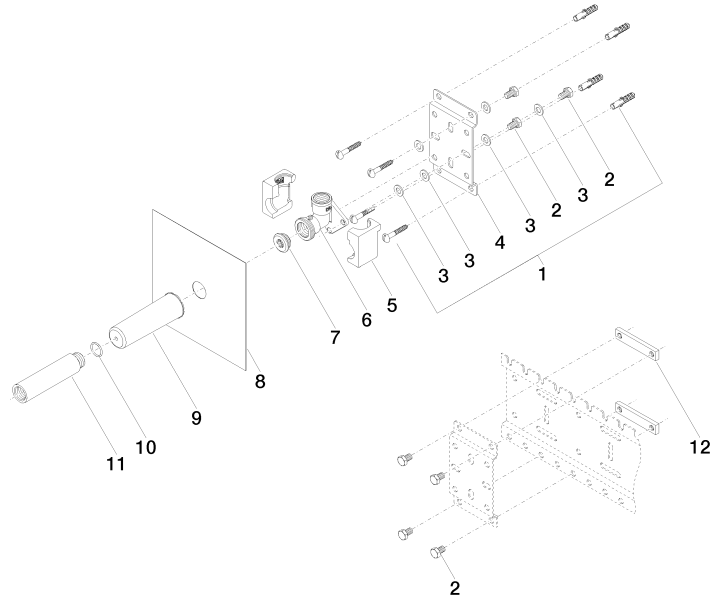
Certificates

LGA_29	WRAS_240502
--------	-------------

Concealed wall elbow -

35 085 970 90

Product version from 3/7/2023





Concealed wall elbow -

35 085 970 90

Spare parts list

Product version from 3/7/2023

No.	Item Number	Name	Quantity used	Delivery time
	04 30 31 024 01 90	fixing set	25	2