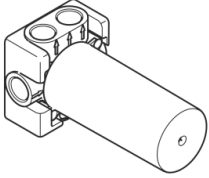


Concealed three-way diverter -

SERIES-VARIOUS

35 104 970 90 Product version up to 5/15/2020



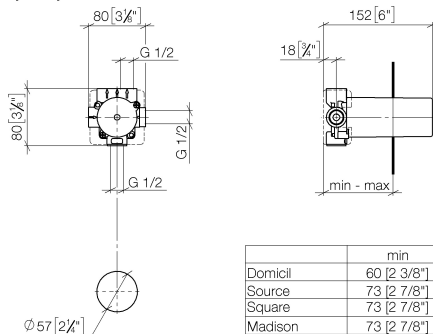
- red brass, lead-free
- 2x female thread 1/2" connections
- 3x female thread 1/2" outlet
- cut-to-length spindle and sleeve
- dust cover
- anti-water packing
- soundproofing

Concealed three-way diverter -

SERIES-VARIOUS

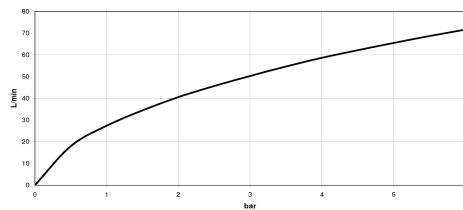
35 104 970 90 Product version up to 5/15/2020

mm [inches]



	min	max
Domicil	60 [2 3/8"]	105 [4 1/8"]
Source	73 [2 7/8"]	123 [4 7/8"]
Square	73 [2 7/8"]	123 [4 7/8"]
Madison	73 [2 7/8"]	138 [5 3/8"]
LULU	73 [2 7/8"]	146 [5 3/4"]
Madison Flair	73 [2 7/8"]	148 [5 7/8"]
Just	78 [3 1/8"]	148 [5 7/8"]
LaFleur	83 [3 1/4"]	148 [5 7/8"]
Supernova	83 [3 1/4"]	148 [5 7/8"]
Tara	83 [3 1/4"]	148 [5 7/8"]
Vaia	83 [3 1/4"]	148 [5 7/8"]
MEM	108 [4 1/4"]	148 [5 7/8"]
CL_1	108 [4 1/4"]	148 [5 7/8"]

Flow rate chart



Codes & Standards

DIN 4109

ISO 3822

Ü-Zeichen



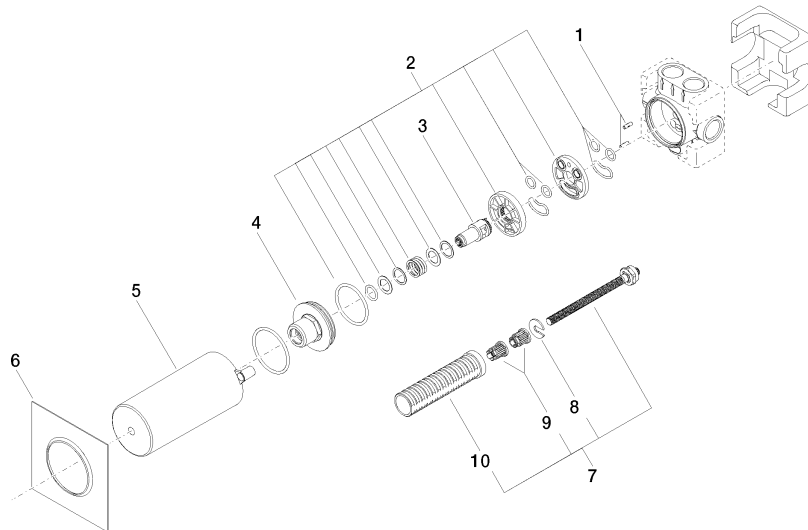
Concealed three-way diverter -

SERIES-VARIOUS

35 104 970 90 Product version up to 5/15/2020

Certificates and sustainability

LGA_28



Spare parts list

No.	Item Number	Name	Quantity used	Delivery time
4	09 21 02 124 90	lid	1.00	2
8	09 16 01 026 90	ring	1.00	2
5	09 21 02 125 90	cap	1.00	2
6	09 14 03 109 90	seal	1.00	2
3	09 29 06 025 90	spindle	1.00	2
9	90 12 12 002 00 90	fixing cap	2.00	2
1	09 31 11 151 90	pin	2.00	2
2	90 30 11 085 00 90	set	1.00	2
10	90 18 40 077 01 90	spindle	1.00	2
7	90 18 40 077 00 90	spindle	1.00	2