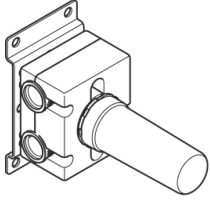


35 125 970 90



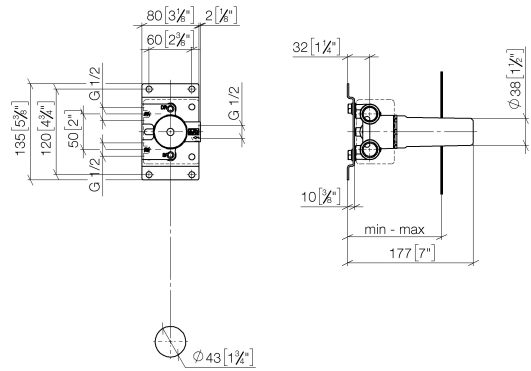
- red brass, lead-free
- female thread 1/2" connection
- 2x female thread 1/2" outlet
- cut-to-length spindle and sleeve
- dust cover
- anti-water packing
- soundproofing
- suitable for xGRID (when using installation track + 12 mm recess depth)

Concealed two-way diverter -

SERIES-VARIOUS

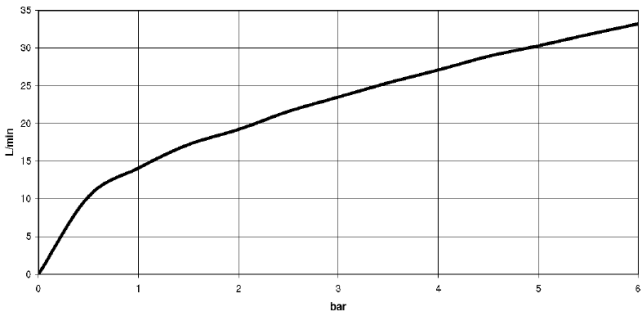
35 125 970 90

mm [inches]



	min	max
DEQUE	91 [3 5/8"]	165 [6 1/2"]
Symetrics	91 [3 5/8"]	165 [6 1/2"]

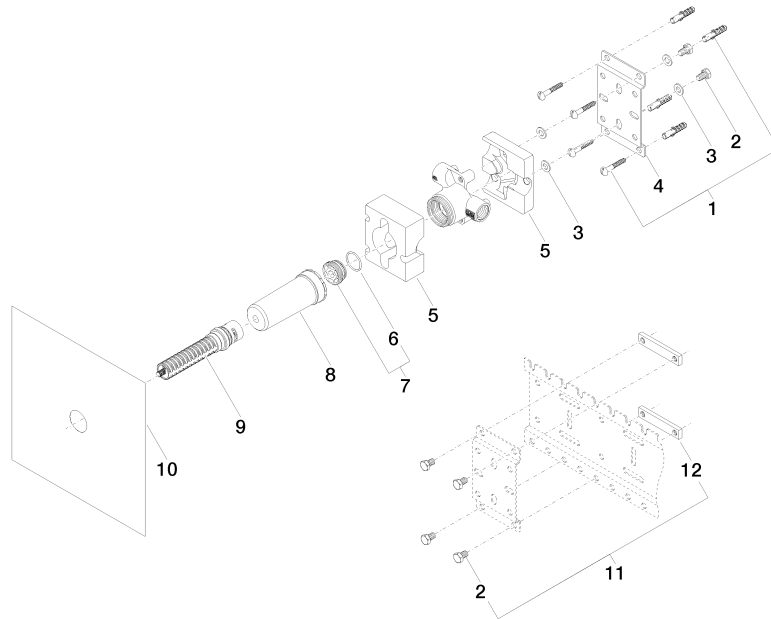
Flow rate chart



### Concealed two-way diverter -

SERIES-VARIOUS

35 125 970 90



## Spare parts list

No.	Item Number	Name	Quantity used	Delivery time
8	09 21 02 136 90	cap	1.00	2
1	04 30 31 024 01 90	fixing set	2.00	2
10	04 14 03 116 00 90	gasket kit	1.00	2
12	09 17 20 100 90	holder	2.00	60
11	04 17 20 100 00 90	fixing set	1.00	2
3	09 30 11 139 90	disc	4.00	2
6	09 14 10 112 90	seal	1.00	2
2	09 30 30 152 90	screw	6.00	2
7	04 30 11 149 00 90	plug	1.00	2
4	09 17 20 094 90	holder	1.00	2
9	90 90 03 159 00 90	diverter	1.00	2
5	09 11 11 035 90	accessories	1.00	60