

Concealed single-lever mixer with cover plate - Light Gold

TARA

36 060 660



- cover plate Ø 78 mm
- WRAS 2107016

Fits: TARA, META

	Light Gold	36 060 660-26
	Chrome	36 060 660-00
	Brushed Platinum	36 060 660-06
	Platinum	36 060 660-08
	Dark Chrome	36 060 660-19
	Brushed Light Gold	36 060 660-27
	Brushed Durabronze (23kt Gold)	36 060 660-28
	Matte Black	36 060 660-33
	Brushed Bronze	36 060 660-42
	Brushed Champagne (22kt Gold)	36 060 660-46
	Champagne (22kt Gold)	36 060 660-47
	Brushed Chrome	36 060 660-93
	Brushed Dark Platinum	36 060 660-99

Required miscellaneous



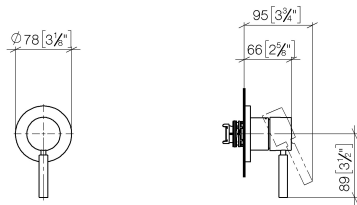
- Concealed wall-mounted single-lever mixer -** 35 860 970 90
- min. recess depth 80 mm
 - max. recess depth 95 mm

Concealed single-lever mixer with cover plate - Light Gold

TARA

36 060 660

mm [inches]



Codes & Standards

DIN 4109

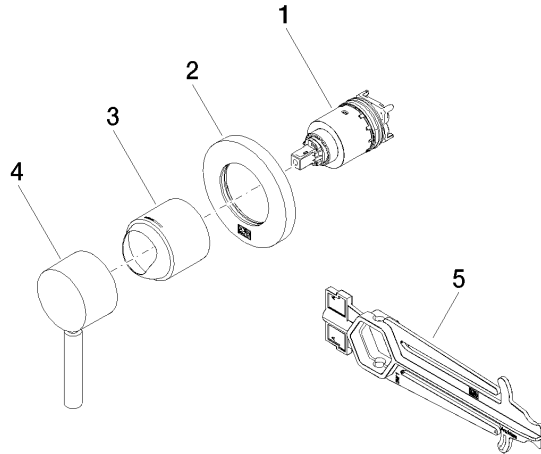
ISO 3822

Ü-Zeichen

Certificates

LGA_29

Product version from 6/29/2020





Concealed single-lever mixer with cover plate - Light Gold

TARA

36 060 660

Spare parts list

Product version from 6/29/2020