

Concealed single-lever mixer with cover plate - Matte Black

TARA

36 060 660



- cover plate Ø 78 mm
- WRAS 2107016

Fits: TARA, META

| | | |
|--|-------------------------------------|---------------|
|  | Matte Black | 36 060 660-33 |
|  | Chrome | 36 060 660-00 |
|  | Brushed Platinum | 36 060 660-06 |
|  | Platinum | 36 060 660-08 |
|  | Dark Chrome | 36 060 660-19 |
|  | Light Gold | 36 060 660-26 |
|  | Brushed Light Gold | 36 060 660-27 |
|  | Brushed Durabronze (23kt Gold) | 36 060 660-28 |
|  | Brushed Bronze | 36 060 660-42 |
|  | Brushed Champagne (22kt Gold) | 36 060 660-46 |
|  | Champagne (22kt Gold) | 36 060 660-47 |
|  | Brushed Chrome | 36 060 660-93 |
|  | Brushed Dark Platinum | 36 060 660-99 |

Required miscellaneous



Concealed wall-mounted single-lever mixer - 35 860 970 90

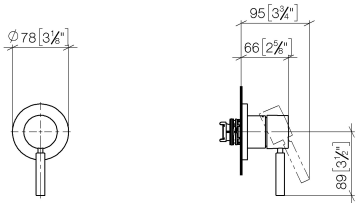
- max. recess depth 95 mm
- min. recess depth 80 mm

Concealed single-lever mixer with cover plate - Matte Black

TARA

36 060 660

mm [inches]



Codes & Standards

| | | | |
|----------|----------|---------------------------|--------------------------------|
| DIN 4109 | ISO 3822 | Scottish Water Byelaws | UK Water Supply Regulations |
|----------|----------|---------------------------|--------------------------------|

Ü-Zeichen

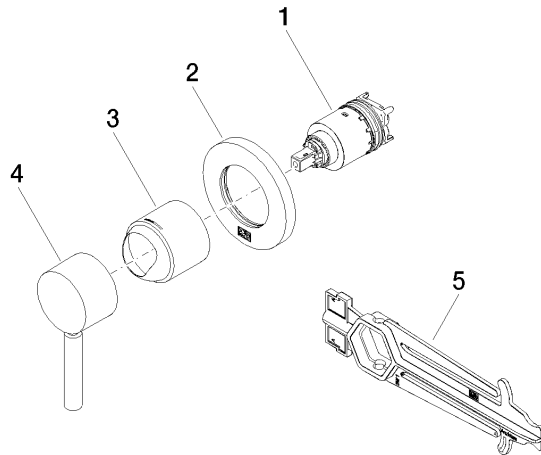
Certificates

| | |
|-----------|--------|
| WRAS_2107 | LGA_29 |
|-----------|--------|

36 060 660

Product version up to 6/29/2020

Product version from 6/29/2020





Concealed single-lever mixer with cover plate - Matte Black

TARA

36 060 660

Spare parts list

Product version up to 6/29/2020

Product version from 6/29/2020

| No. | Item Number | Name | Quantity used | Delivery time |
|-----|--------------------|-----------|---------------|---------------|
| | 90 15 05 064 01 90 | cartridge | 5 | 2 |