

Concealed single-lever mixer with cover plate - Brushed Bronze







TARA

36 060 660

- cover plate Ø 78 mm
- WRAS 2107016



Fits: TARA, META

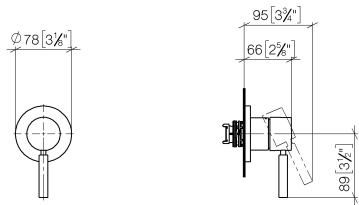
	Brushed Bronze	36 060 660-42
	Chrome	36 060 660-00
	Brushed Platinum	36 060 660-06
	Platinum	36 060 660-08
	Dark Chrome	36 060 660-19
	Light Gold	36 060 660-26
	Brushed Light Gold	36 060 660-27
	Brushed Durabronze (23kt Gold)	36 060 660-28
	Matte Black	36 060 660-33
	Brushed Champagne (22kt Gold)	36 060 660-46
	Champagne (22kt Gold)	36 060 660-47
	Brushed Chrome	36 060 660-93
	Brushed Dark Platinum	36 060 660-99

Concealed single-lever mixer with cover plate - Brushed Bronze

TARA

36 060 660

mm [inches]



Codes & Standards

DIN 4109

ISO 3822

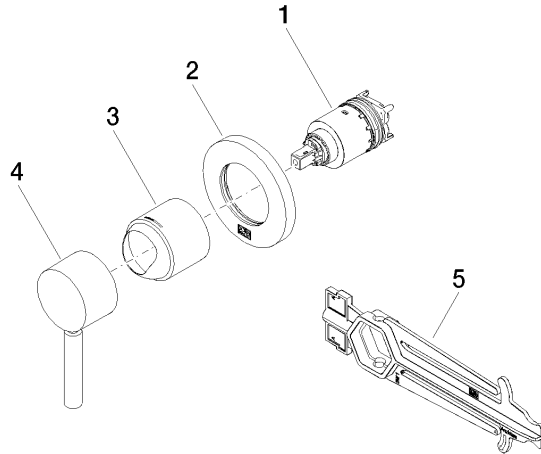
Ü-Zeichen

Certificates

LGA_29

Product version from 6/29/2020

Parts for other
finishes can be found
here: [Chrome](#)





Concealed single-lever mixer with cover plate - Brushed Bronze

TARA

36 060 660

Spare parts list

Product version from 6/29/2020