

Concealed single-lever mixer with cover plate - Brushed Platinum

SERIES SPECIFIC

36 060 670 Product version from 6/1/2024



- cover plate 80 x 80 mm
- WRAS

	Brushed Platinum	36 060 670-06
	Chrome	36 060 670-00
	Platinum	36 060 670-08
	Dark Chrome	36 060 670-19
	Brushed Light Gold	36 060 670-27
	Brushed Durabrass (23kt Gold)	36 060 670-28
	Matte Black	36 060 670-33
	Brushed Champagne (22kt Gold)	36 060 670-46
	Champagne (22kt Gold)	36 060 670-47
	Brushed Chrome	36 060 670-93
	Brushed Dark Platinum	36 060 670-99

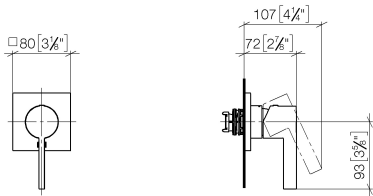
Required miscellaneous

Concealed wall-mounted single-lever mixer - 35 860 970 90



- max. recess depth 95 mm
- min. recess depth 80 mm

mm [inches]



Flow rate chart



Codes & Standards

DIN 4109	ISO 3822	Scottish Water Byelaws	UK Water Supply Regulations
----------	----------	---------------------------	--------------------------------

Ü-Zeichen



Concealed single-lever mixer with cover plate - Brushed Platinum

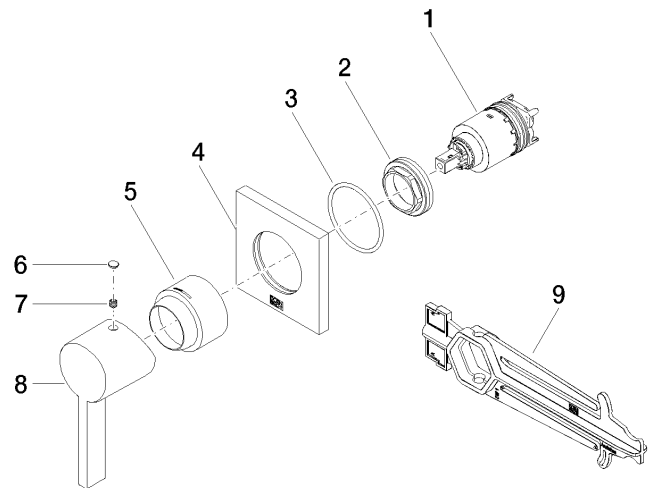
SERIES SPECIFIC

36 060 670 Product version from 6/1/2024

Certificates and sustainability

WRAS_2107

LGA_29



Spare parts list

No.	Item Number	Name	Quantity used	Delivery time
	4 09 27 78 048-06	rosette	1.00	10
	6 90 31 20 087 00-06	plug	1.00	10
	5 09 11 02 530-06	cover	1.00	10
	8 09 20 67 004-06	handle	1.00	10
	1 90 15 05 064 01 90	cartridge	1.00	2
	2 09 24 04 105 90	nut	1.00	2
	3 90 14 10 049 00 90	seal	1.00	2
	7 90 31 11 112 00 90	pin	1.00	2
	9 90 30 09 064 00 90	key	1.00	2