

Concealed single-lever mixer with cover plate - Brushed Durabrand (23kt Gold) SERIES SPECIFIC

36 060 670 Product version from 6/1/2024



- cover plate 80 x 80 mm
- WRAS

| | | |
|---|-------------------------------|---------------|
|  | Brushed Durabrand (23kt Gold) | 36 060 670-28 |
|  | Chrome | 36 060 670-00 |
|  | Brushed Platinum | 36 060 670-06 |
|  | Platinum | 36 060 670-08 |
|  | Dark Chrome | 36 060 670-19 |
|  | Brushed Light Gold | 36 060 670-27 |
|  | Matte Black | 36 060 670-33 |
|  | Brushed Champagne (22kt Gold) | 36 060 670-46 |
|  | Champagne (22kt Gold) | 36 060 670-47 |
|  | Brushed Chrome | 36 060 670-93 |
|  | Brushed Dark Platinum | 36 060 670-99 |

Required miscellaneous



- Concealed wall-mounted single-lever mixer -

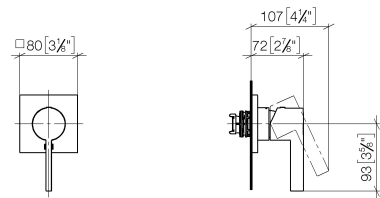
35 860 970 90
- max. recess depth 95 mm
 - min. recess depth 80 mm

Concealed single-lever mixer with cover plate - Brushed Durabron (23kt Gold)

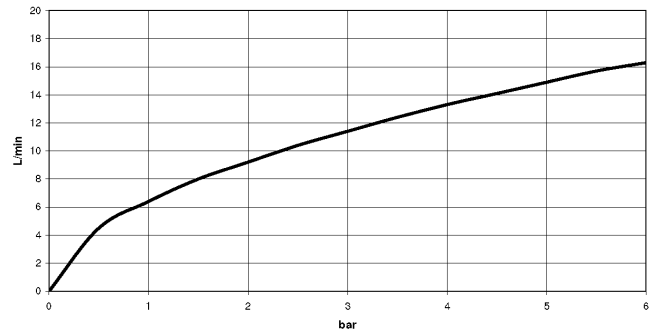
SERIES SPECIFIC

36 060 670 Product version from 6/1/2024

mm [inches]



Flow rate chart



Codes & Standards

| | | | |
|----------|----------|---------------------------|--------------------------------|
| DIN 4109 | ISO 3822 | Scottish Water Byelaws | UK Water Supply Regulations |
|----------|----------|---------------------------|--------------------------------|

Ü-Zeichen



Concealed single-lever mixer with cover plate - Brushed Durabronz (23kt Gold) SERIES SPECIFIC

36 060 670 Product version from 6/1/2024

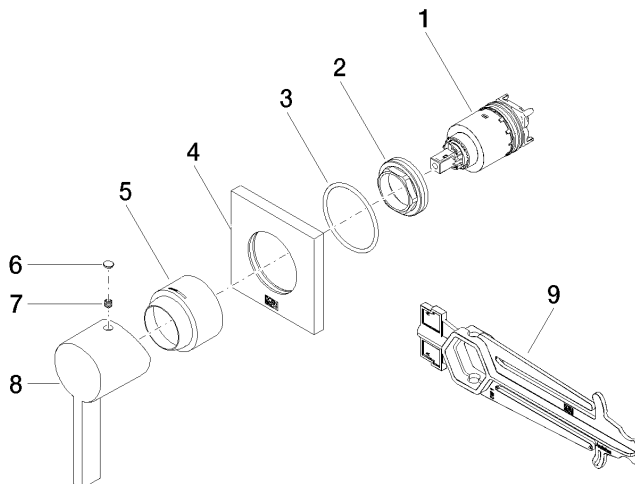
Certificates and sustainability

WRAS_2107

LGA_29

Concealed single-lever mixer with cover plate - Brushed Durabronz (23kt Gold) SERIES SPECIFIC

36 060 670 Product version from 6/1/2024



Spare parts list

| No. | Item Number | Name | Quantity used | Delivery time |
|-----|--------------------|-----------|---------------|---------------|
| 1 | 90 15 05 064 01 90 | cartridge | 1.00 | 2 |
| 5 | 09 11 02 530-28 | cover | 1.00 | 20 |
| 8 | 09 20 67 004-28 | handle | 1.00 | 20 |
| 4 | 09 27 78 048-28 | rosette | 1.00 | 20 |
| 6 | 90 31 20 087 00-28 | plug | 1.00 | 20 |
| 2 | 09 24 04 105 90 | nut | 1.00 | 2 |
| 3 | 90 14 10 049 00 90 | seal | 1.00 | 2 |
| 9 | 90 30 09 064 00 90 | key | 1.00 | 2 |
| 7 | 90 31 11 112 00 90 | pin | 1.00 | 2 |