

## VAIA Concealed single-lever mixer with cover plate - Brushed Dark Platinum

VAIA

36 060 809 Product version from 4/1/2025

- cover plate 80 x 80 mm



|   |                                |               |
|---|--------------------------------|---------------|
|    | Brushed Dark Platinum          | 36 060 809-99 |
|    | Chrome                         | 36 060 809-00 |
|    | Brushed Platinum               | 36 060 809-06 |
|    | Platinum                       | 36 060 809-08 |
|    | Dark Chrome                    | 36 060 809-19 |
|    | Brushed Durabronze (23kt Gold) | 36 060 809-28 |
|    | Brushed Dark Brass             | 36 060 809-39 |
|    | Brushed Bronze                 | 36 060 809-42 |
|    | Brushed Champagne (22kt Gold)  | 36 060 809-46 |
|  | Champagne (22kt Gold)          | 36 060 809-47 |

### Required miscellaneous



- Concealed wall-mounted single-lever mixer -** 35 860 970 90
- max. recess depth 95 mm
  - min. recess depth 80 mm

mm [inches]



### Flow rate chart



### Codes & Standards

DIN 4109

ISO 3822

Ü-Zeichen



## VAIA Concealed single-lever mixer with cover plate - Brushed Dark Platinum

---

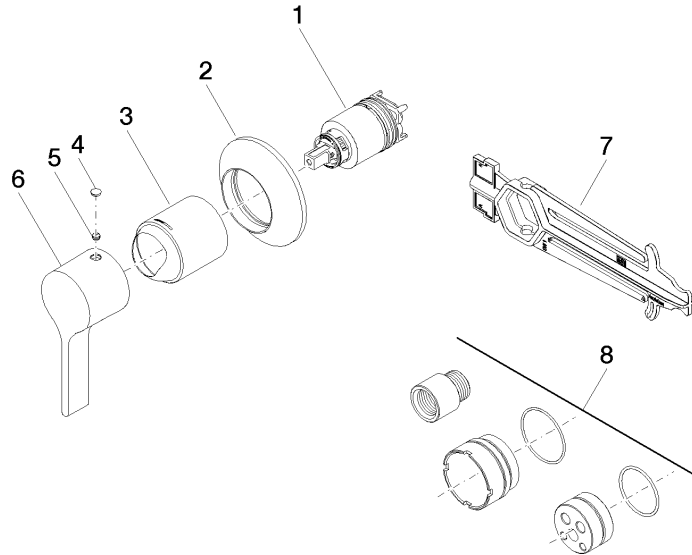
VAIA

36 060 809 Product version from 4/1/2025

Certificates and sustainability

---

LGA\_29



## Spare parts list

| No. | Item Number        | Name              | Quantity used | Delivery time |
|-----|--------------------|-------------------|---------------|---------------|
| 4   | 90 31 20 087 00-99 | plug              | 1.00          | 20            |
| 3   | 09 11 02 293-99    | cover             | 1.00          | 20            |
| 1   | 90 15 05 064 01 90 | cartridge         | 1.00          | 2             |
| 6   | 09 20 80 021-99    | handle            | 1.00          | 20            |
| 2   | 90 27 80 032 00-99 | rosette           | 1.00          | 20            |
| 7   | 90 30 09 064 00 90 | key               | 1.00          | 2             |
| 5   | 90 31 11 063 00 90 | pin               | 1.00          | 2             |
| 8   | 12 869 970 90      | Extension 20 mm - | 1.00          | 2             |