

Concealed single-lever mixer with diverter - Brushed Bronze

36 120 660
Product version from 2/20/2020



- automatic diverter
- cover plate Ø 150 mm
- WRAS

	Brushed Bronze	36 120 660-42
	Chrome	36 120 660-00
	Brushed Platinum	36 120 660-06
	Platinum	36 120 660-08
	Dark Chrome	36 120 660-19
	Light Gold	36 120 660-26
	Brushed Light Gold	36 120 660-27
	Brushed Durabrass (23kt Gold)	36 120 660-28
	Matte Black	36 120 660-33
	Brushed Champagne (22kt Gold)	36 120 660-46
	Champagne (22kt Gold)	36 120 660-47
	Brushed Chrome	36 120 660-93
	Brushed Dark Platinum	36 120 660-99

Required miscellaneous



Concealed single-lever mixer -

35 020 970 90

- min. recess depth mm
- max. recess depth mm



Concealed single-lever mixer with backflow preventor -

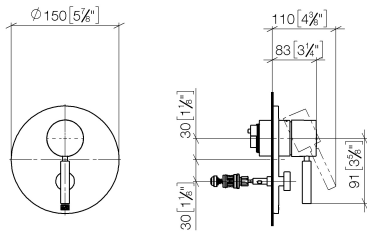
35 021 970 90

- min. recess depth mm
- max. recess depth mm

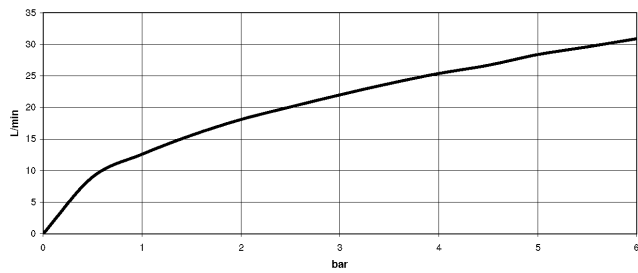
Concealed single-lever mixer with diverter - Brushed Bronze

36 120 660 Product version from 2/20/2020

mm [inches]



Flow rate chart



Codes & Standards

DIN 4109	ISO 3822	Scottish Water Byelaws	UK Water Supply Regulations
----------	----------	---------------------------	--------------------------------

Ü-Zeichen



Concealed single-lever mixer with diverter - Brushed Bronze

36 120 660 Product version from 2/20/2020

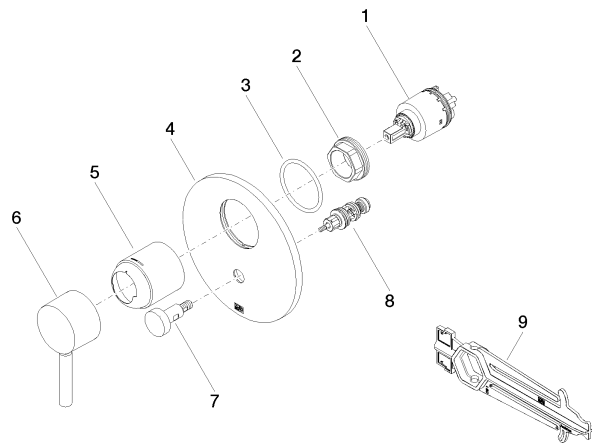
Certificates

LGA_19

WRAS_2207

Concealed single-lever mixer with diverter - Brushed Bronze

36 120 660 Product version from 2/20/2020



Spare parts list

No.	Item Number	Name	Quantity used	Delivery time
1	90 15 05 039 00 90	cartridge	1	2
2	09 24 04 448 90	nut	1	2
3	09 14 10 084 90	seal	1	2
4	09 11 02 261-42	plate	1	60
5	09 11 02 260-42	sleeve	1	60
6	90 20 66 004 00-42	handle	1	30
7	90 31 09 139 00-42	pull-rod	1	30
8	90 21 34 081 00 90	diverter	1	2
9	90 30 09 064 00 90	key	1	2