

## TARA Concealed two-way diverter - Platinum

TARA

36 200 892



- rotary diverter
- rosette 60 mm
- WRAS 2307045

	Platinum	36 200 892-08
	Chrome	36 200 892-00
	Brushed Platinum	36 200 892-06
	Dark Chrome	36 200 892-19
	Brushed Durabronze (23kt Gold)	36 200 892-28
	Matte Black	36 200 892-33
	Brushed Bronze	36 200 892-42
	Brushed Champagne (22kt Gold)	36 200 892-46
	Champagne (22kt Gold)	36 200 892-47
	Brushed Chrome	36 200 892-93
	Brushed Dark Platinum	36 200 892-99

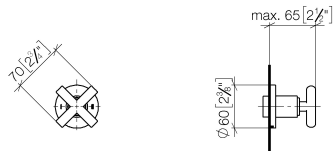
### Required miscellaneous



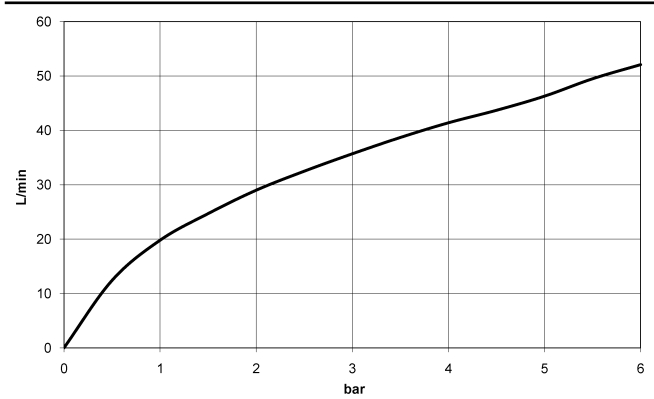
- Concealed two-way diverter -** 35 202 970 90
- max. recess depth 160 mm
  - min. recess depth 85 mm

36 200 892

mm [inches]



Flow rate chart



Codes & Standards

DIN 4109	ISO 3822	Scottish Water Byelaws	UK Water Supply Regulations
----------	----------	---------------------------	--------------------------------

Ü-Zeichen



## TARA Concealed two-way diverter - Platinum

---

TARA

36 200 892

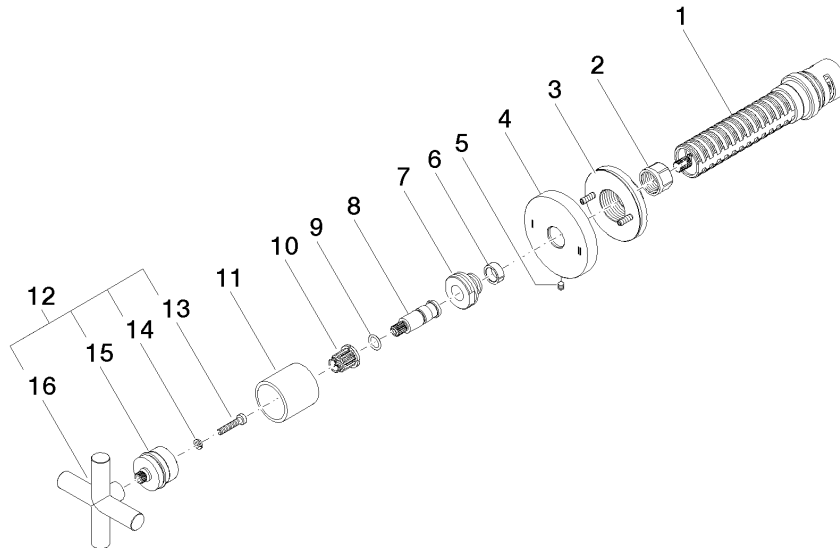
### Certificates

---

WRAS\_2307

LGA\_38

**Product version from 4/1/2022**





## TARA Concealed two-way diverter - Platinum

TARA

36 200 892

### Spare parts list

#### Product version from 4/1/2022

No.	Item Number	Name	Quantity used	Delivery time
	90 90 03 304 10 90	diverter	16	2