

TARA Concealed two-way diverter - Brushed Durabrand (23kt Gold)

TARA

36 200 892



- rotary diverter
- rosette 60 mm
- WRAS 2307045

	Brushed Durabrand (23kt Gold)	36 200 892-28
	Chrome	36 200 892-00
	Brushed Platinum	36 200 892-06
	Platinum	36 200 892-08
	Dark Chrome	36 200 892-19
	Matte Black	36 200 892-33
	Brushed Bronze	36 200 892-42
	Brushed Champagne (22kt Gold)	36 200 892-46
	Champagne (22kt Gold)	36 200 892-47
	Brushed Chrome	36 200 892-93
	Brushed Dark Platinum	36 200 892-99

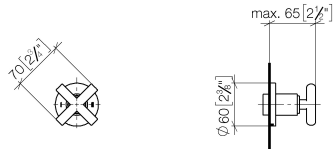
Required miscellaneous



- Concealed two-way diverter -** 35 202 970 90
- max. recess depth 160 mm
 - min. recess depth 85 mm

36 200 892

mm [inches]



Flow rate chart



Codes & Standards

DIN 4109

ISO 3822

Scottish Water
Byelaws

UK Water Supply
Regulations

Ü-Zeichen



TARA Concealed two-way diverter - Brushed Durabross (23kt Gold)

TARA

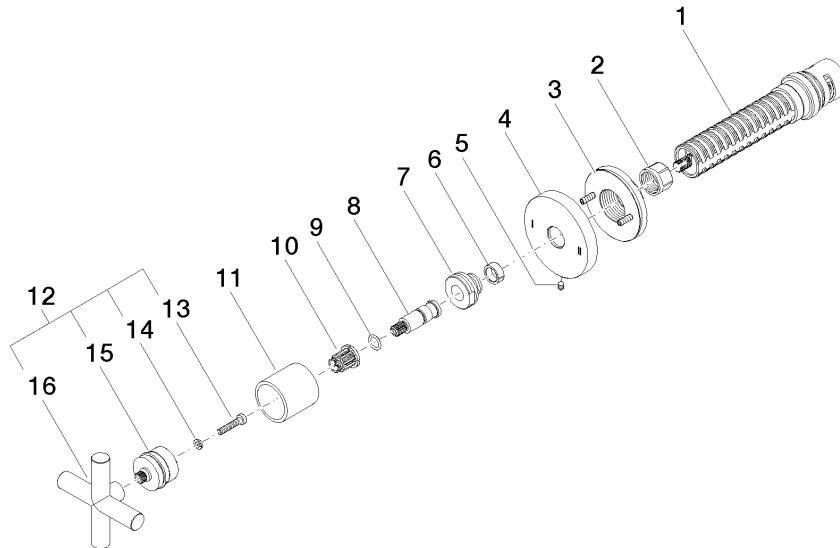
36 200 892

Certificates

WRAS_2307

LGA_38

Product version from 4/1/2022





TARA Concealed two-way diverter - Brushed Durabrass (23kt Gold)

TARA

36 200 892

Spare parts list

Product version from 4/1/2022

No.	Item Number	Name	Quantity used	Delivery time
	90 90 03 304 10 90	diverter	16	2