

SYMETRICS Concealed two-way diverter - Brushed Durabron (23kt Gold)

IMO

36 200 980



- rotary diverter
- rosette 60 x 60 mm
- WRAS 2307045

	Brushed Durabron (23kt Gold)	36 200 980-28
	Chrome	36 200 980-00
	Brushed Platinum	36 200 980-06
	Brushed Light Gold	36 200 980-27
	Brushed Champagne (22kt Gold)	36 200 980-46
	Champagne (22kt Gold)	36 200 980-47
	Brushed Dark Platinum	36 200 980-99

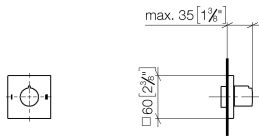
Required miscellaneous



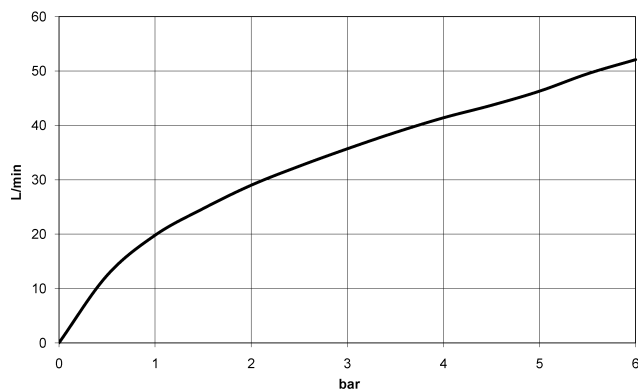
- Concealed two-way diverter -** 35 202 970 90
- max. recess depth 160 mm
  - min. recess depth 85 mm

36 200 980

mm [inches]



**Flow rate chart**



**Codes & Standards**

DIN 4109

ISO 3822

Scottish Water  
Byelaws

UK Water Supply  
Regulations

Ü-Zeichen



## SYMETRICS Concealed two-way diverter - Brushed Durabrass (23kt Gold)

---

IMO

36 200 980

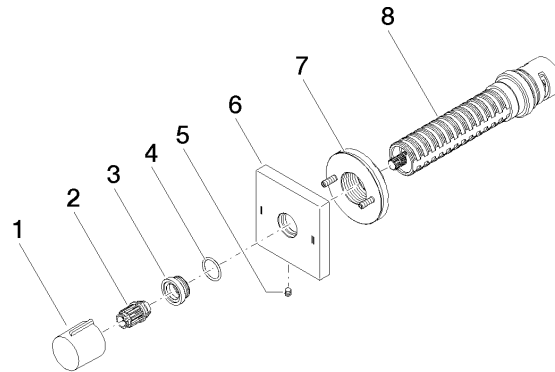
### Certificates

---

WRAS\_2307

LGA\_38

**Product version from 4/1/2022**





## SYMETRICS Concealed two-way diverter - Brushed Durabrass (23kt Gold)

IMO

36 200 980

### Spare parts list

#### Product version from 4/1/2022

No.	Item Number	Name	Quantity used	Delivery time
	09 20 98 001-28	handle	8	20