

SYMETRICS Concealed two-way diverter - Brushed Dark Platinum

SYMETRICS

36 200 985

Product version from 4/1/2022



- rotary diverter
- rosette 60 x 60 mm
- WRAS

|   |                               |               |
|---|-------------------------------|---------------|
|    | Brushed Dark Platinum         | 36 200 985-99 |
|    | Chrome                        | 36 200 985-00 |
|    | brushed chrome                | 36 200 985-93 |
|    | Brushed Platinum              | 36 200 985-06 |
|    | Dark Chrome                   | 36 200 985-19 |
|    | Brushed Light Gold            | 36 200 985-27 |
|    | Brushed Durabrass (23kt Gold) | 36 200 985-28 |
|    | Matte Black                   | 36 200 985-33 |
|    | Brushed Champagne (22kt Gold) | 36 200 985-46 |
|  | Champagne (22kt Gold)         | 36 200 985-47 |

Required miscellaneous



- Concealed two-way diverter -

35 202 970 90

  - max. recess depth 160 mm
  - min. recess depth 85 mm

36 200 985    Product version from 4/1/2022

mm [inches]



Flow rate chart



Codes & Standards

|          |          |                           |                                |
|----------|----------|---------------------------|--------------------------------|
| DIN 4109 | ISO 3822 | Scottish Water<br>Byelaws | UK Water Supply<br>Regulations |
|----------|----------|---------------------------|--------------------------------|

Ü-Zeichen



## SYMETRICS Concealed two-way diverter - Brushed Dark Platinum

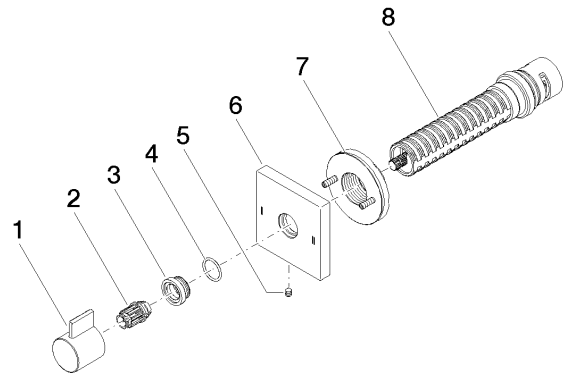
SYMETRICS

36 200 985 Product version from 4/1/2022

Certificates and sustainability

LGA\_38

WRAS\_2307



### Spare parts list

| No. | Item Number        | Name       | Quantity used | Delivery time |
|-----|--------------------|------------|---------------|---------------|
| 3   | 09 12 12 043-99    | base       | 1.00          | 20            |
| 8   | 90 90 03 304 10 90 | diverter   | 1.00          | 2             |
| 1   | 09 20 98 002-99    | handle     | 1.00          | 20            |
| 7   | 90 21 02 181 00 90 | disc       | 1.00          | 2             |
| 5   | 09 31 11 294 90    | pin        | 1.00          | 2             |
| 4   | 09 14 10 017 90    | seal       | 1.00          | 2             |
| 2   | 09 12 12 005 90    | fixing cap | 1.00          | 2             |
| 6   | 09 27 98 037-99    | rosette    | 1.00          | 20            |