

LISSÉ Concealed thermostat with two function volume control - Chrome

LISSÉ

36 426 845 Product version from 3/9/2016 to 8/24/2020



- rotary diverter with volume control and shut-off function
- cover plate 150 x 90 mm
- temperature control handle with safety limit stop at 38°C
- hot water temperature limiter, can be preset
- WRAS

	Chrome	36 426 845-00
	Brushed Platinum	36 426 845-06
	Dark Chrome	36 426 845-19
	Brushed Light Gold	36 426 845-27
	Matte Black	36 426 845-33
	Brushed Chrome	36 426 845-93
	Brushed Dark Platinum	36 426 845-99

Required miscellaneous

Concealed thermostat with built-in isolators -

35 426 970 90

- max. recess depth 136 mm
- min. recess depth 80 mm

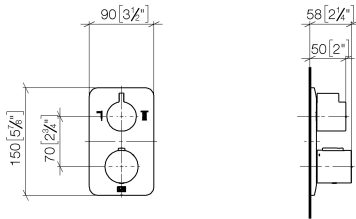
Required miscellaneous

Concealed thermostat -

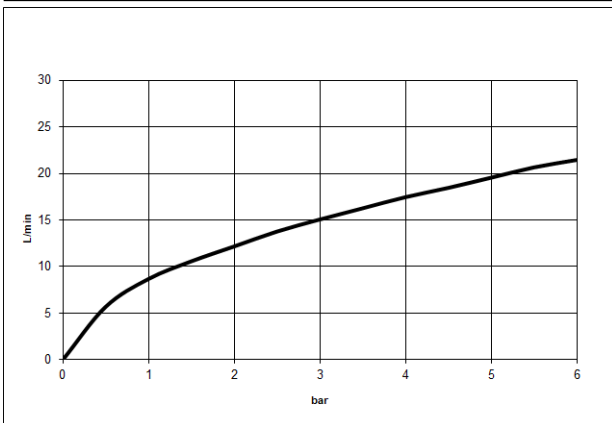
35 425 970 90

- max. recess depth 136 mm
- min. recess depth 80 mm

mm [inches]



Flow rate chart



Codes & Standards

DIN 4109	EN 1111	ISO 3822	Scottish Water Byelaws
UK Water Supply Regulations	Ü-Zeichen	VA-Zeichen	XP P 41-280



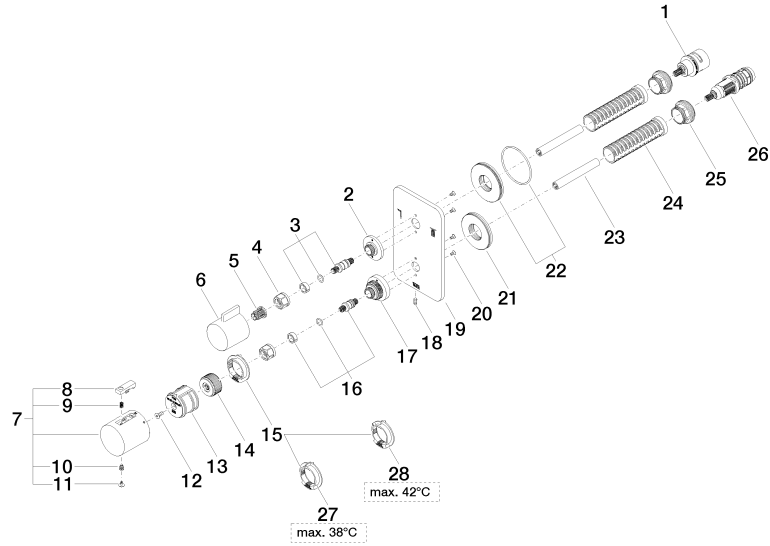
LISSE Concealed thermostat with two function volume control - Chrome

LISSE

36 426 845 Product version from 3/9/2016 to 8/24/2020

Certificates and sustainability

ACS_20 ACC LY	LGA_19	ETA_20	DVGW_DW-6512DN0	LGA_19
WRAS_250402				



Spare parts list

No.	Item Number	Name	Quantity used	Delivery time
26	90 15 02 012 00 90	cartridge	1.00	60
18	09 31 11 134 90	pin	1.00	2
1	90 90 03 163 00 90	diverter	1.00	2
28	09 28 10 151 90	regulator	1.00	60
21	09 30 01 188 90	disc	1.00	60
15	09 28 10 143 90	regulator	1.00	60
27	09 28 10 150 90	regulator	1.00	60
20	09 30 30 157 90	screw	4.00	2
7	90 17 33 004 00-00	handle	1.00	60
5	90 12 12 002 00 90	fixing cap	1.00	2
19	09 11 02 303-00	plate	1.00	10
14	09 12 12 054 90	base	1.00	2
17	09 12 12 051-00	base	1.00	10
6	09 20 67 006-00	handle	1.00	10
25	09 24 04 257 90	nut	2.00	2
2	09 12 12 053-00	base	1.00	10
9	90 16 02 027 00 90	spring	1.00	2
22	90 30 01 190 00 90	disc	1.00	2
4	90 23 30 023 00 90	nut	2.00	2
12	90 30 30 124 00 90	screw	1.00	2
24	90 18 40 077 01 90	spindle	2.00	2
10	90 30 30 136 00 90	screw	1.00	2
3	04 29 06 111 01-00	spindle	1.00	10
13	90 12 12 052 00 90	base	1.00	2
11	90 31 20 049 00-00	plug	1.00	10
16	04 29 06 024 01-00	spindle	1.00	10
23	90 23 01 124 00 90	sleeve	2.00	2
8	90 21 33 011 00-13	handle	1.00	2