








LISSÉ Concealed thermostat with two function volume control - Brushed Chrome

LISSÉ

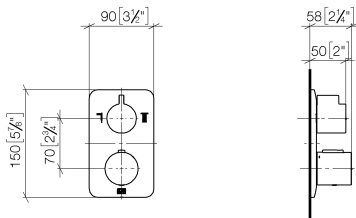
36 426 845	Product version from 3/9/2016 to 8/24/2020		
	<ul style="list-style-type: none"> rotary diverter with volume control and shut-off function cover plate 150 x 90 mm temperature control handle with safety limit stop at 38°C hot water temperature limiter, can be preset WRAS 		Brushed Chrome
			36 426 845-93
			Chrome
			36 426 845-00
			Brushed Platinum
			36 426 845-06
			Dark Chrome
			36 426 845-19
			Brushed Light Gold
			36 426 845-27
			Matte Black
			36 426 845-33
			Brushed Dark Platinum
			36 426 845-99



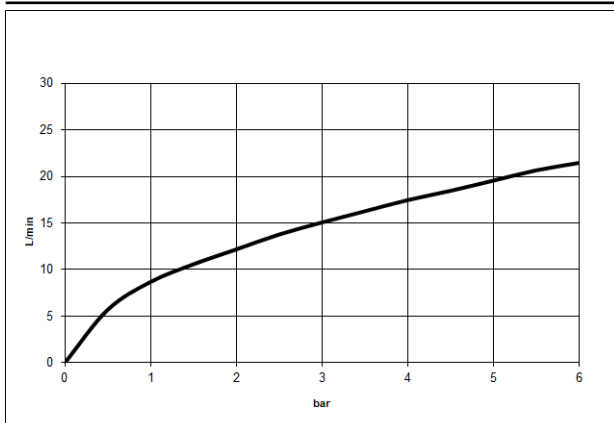
LISSE Concealed thermostat with two function volume control - Brushed Chrome

LISSE

36 426 845 Product version from 3/9/2016 to 8/24/2020
mm [inches]



Flow rate chart



Codes & Standards

DIN 4109	EN 1111	ISO 3822	Scottish Water Byelaws
UK Water Supply Regulations	Ü-Zeichen	VA-Zeichen	XP P 41-280



LISSE Concealed thermostat with two function volume control - Brushed Chrome

LISSE

36 426 845 Product version from 3/9/2016 to 8/24/2020

Certificates and sustainability

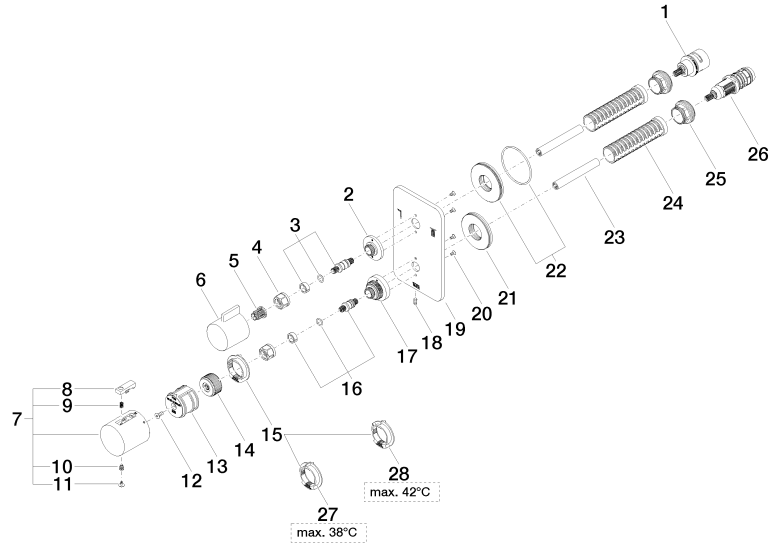
ACS_20 ACC LY	LGA_19	ETA_20	DVGW_DW-6512DN0	LGA_19
WRAS_250402				

LISSÉ Concealed thermostat with two function volume control - Brushed Chrome

LISSÉ

36 426 845 Product version from 3/9/2016 to 8/24/2020

Parts for other
finishes can be found
here: [Chrome](#)





LISSÉ Concealed thermostat with two function volume control - Brushed Chrome

LISSÉ

36 426 845 Product version from 3/9/2016 to 8/24/2020

Spare parts list

No.	Item Number	Name	Quantity used	Delivery time
7	90 17 33 004 00-93	handle	1.00	60
19	09 11 02 303-93	plate	1.00	20
5	90 12 12 002 00 90	fixing cap	1.00	2
9	90 16 02 027 00 90	spring	1.00	2
6	09 20 67 006-93	handle	1.00	20
18	09 31 11 134 90	pin	1.00	2
28	09 28 10 151 90	regulator	1.00	60
21	09 30 01 188 90	disc	1.00	60
15	09 28 10 143 90	regulator	1.00	60
2	09 12 12 053-93	base	1.00	20
25	09 24 04 257 90	nut	2.00	2
1	90 90 03 163 00 90	diverter	1.00	2
22	90 30 01 190 00 90	disc	1.00	2
20	09 30 30 157 90	screw	4.00	2
27	09 28 10 150 90	regulator	1.00	60
14	09 12 12 054 90	base	1.00	2
17	09 12 12 051-93	base	1.00	20
26	90 15 02 012 00 90	cartridge	1.00	60
16	04 29 06 024 01-00	spindle	1.00	10
23	90 23 01 124 00 90	sleeve	2.00	2
13	90 12 12 052 00 90	base	1.00	2
3	04 29 06 111 01-00	spindle	1.00	10
24	90 18 40 077 01 90	spindle	2.00	2
12	90 30 30 124 00 90	screw	1.00	2
11	90 31 20 049 00-13	plug	1.00	30
10	90 30 30 136 00 90	screw	1.00	2
4	90 23 30 023 00 90	nut	2.00	2
8	90 21 33 011 00-13	handle	1.00	2