

WATER CURVE Concealed body spray - Brushed Light Gold

SERIES-VARIOUS

36 514 979 Product version from 4/1/2024



- AQUAPRESSURE FLOW, max. flow rate 10 l/min (at 3 bar)
- water jet adjustable
- Function from: l/min

Technical data:

- cover plate 120 x 60 mm
- 1/2" connection

	Brushed Light Gold	36 514 979-27
	Chrome	36 514 979-00
	Brushed Platinum	36 514 979-06
	Platinum	36 514 979-08
	Dark Chrome	36 514 979-19
	Light Gold	36 514 979-26
	Brushed Durabrass (23kt Gold)	36 514 979-28
	Matte Black	36 514 979-33
	Brushed Dark Brass	36 514 979-39
	Brushed Bronze	36 514 979-42
	Brushed Champagne (22kt Gold)	36 514 979-46
	Champagne (22kt Gold)	36 514 979-47
	Brushed Chrome	36 514 979-93
	Brushed Dark Platinum	36 514 979-99

Recommended miscellaneous



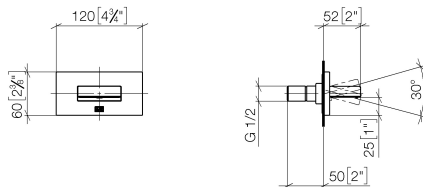
- Concealed wall elbow -

- min. recess depth 90 mm
 - max. recess depth 163 mm

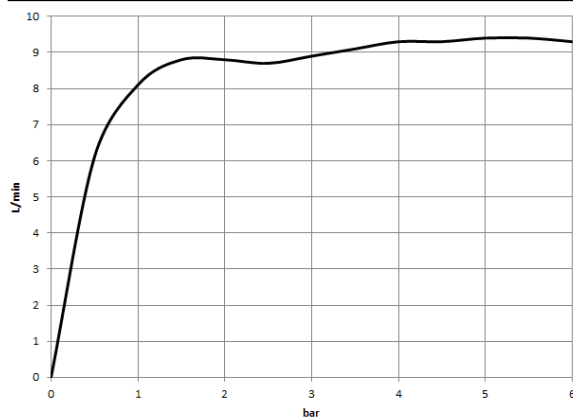
35 085 970 90

36 514 979 Product version from 4/1/2024

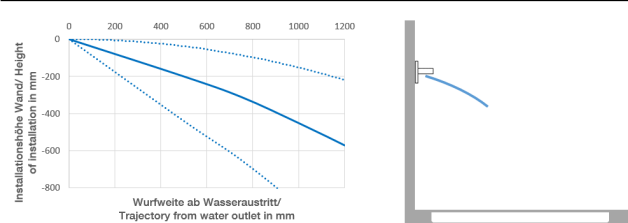
mm [inches]



Flow rate chart



Trajectory diagram



Codes & Standards

DIN 4109

ISO 3822

Scottish Water
Byelaws

UK Water Supply
Regulations

Ü-Zeichen



WATER CURVE Concealed body spray - Brushed Light Gold

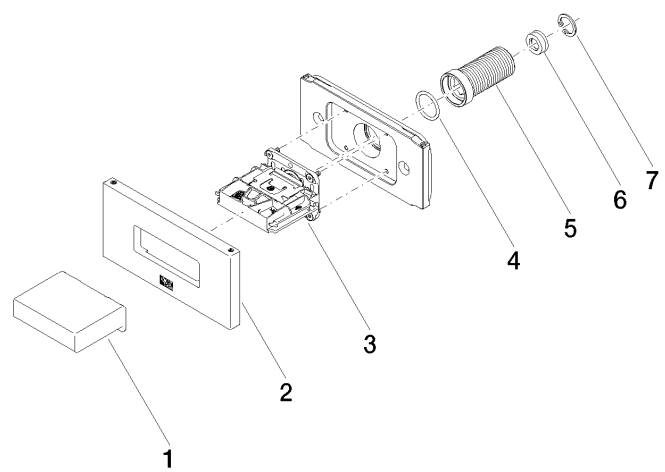
SERIES-VARIOUS

36 514 979 Product version from 4/1/2024

Certificates and sustainability

LGA_29

WRAS_250602



Spare parts list

No.	Item Number	Name	Quantity used	Delivery time
	5 09 24 04 336 90	nipple	1.00	2
	1 09 17 01 230-27	casing	1.00	60
	3 90 29 03 088 00 90	insert	1.00	2
	4 90 14 10 010 00 90	seal	1.00	2
	2 90 27 97 041 00-27	rosette	1.00	20
	6 09 23 01 134 90	flow reducer	1.00	2
	7 09 16 01 014 90	ring	1.00	2