


MADISON Wall valve clockwise closing 1/2" - Brushed Dark Platinum
MADISON

36 607 361



- rosette Ø 55 mm
- head part with cut-to-length spindle and sleeve
- 3x porcelain insert: HOT, COLD and NEUTRAL
- WRAS 2011026, 2010066

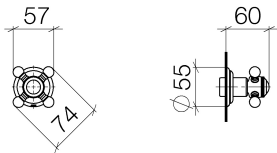
	Brushed Dark Platinum	36 607 361-99
	Chrome	36 607 361-00
	Brushed Platinum	36 607 361-06
	Platinum	36 607 361-08
	Durabrand (23kt Gold)	36 607 361-09
	Brushed Durabrand (23kt Gold)	36 607 361-28

Required miscellaneous



- Wall valve 1/2" -**
35 607 970 90
- max. recess depth 145 mm
 - min. recess depth 75 mm

36 607 361



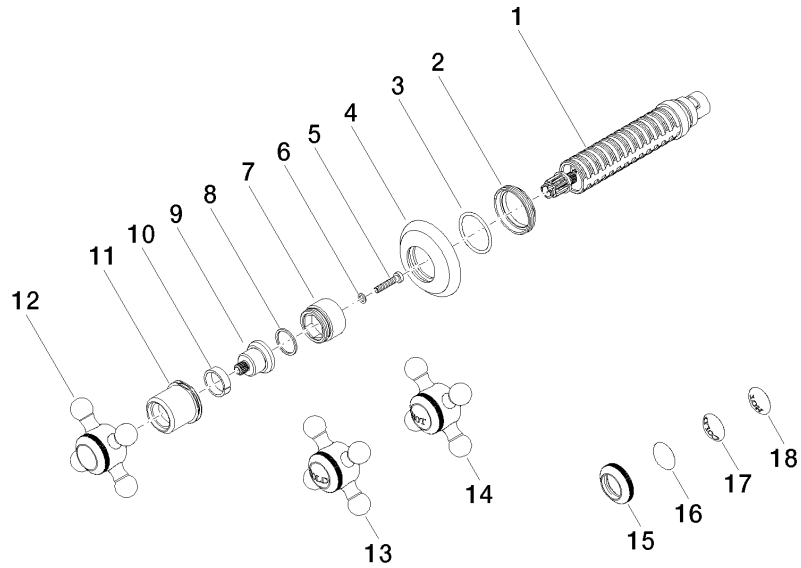
Codes & Standards

ASME A112.18.1	cUPC	DIN 4109	EN 1111
EN 200	ISO 3822	Scottish Water Byelaws	UK Water Supply Regulations

Ü-Zeichen

Certificates

IAPMO_4976	DVGW_DW-6501DN0	WRAS_2010	LGA_29	LGA_29
DVGW_DW-6512DN0	WRAS_2011			





MADISON Wall valve clockwise closing 1/2" - Brushed Dark Platinum

MADISON

36 607 361

Spare parts list

No.	Item Number	Name	Quantity used	Delivery time
	90 90 03 143 00 90	top	18	2