

VAIA Wall valve clockwise closing 1/2" - Dark Chrome

VAIA

36 607 809



- rosette Ø 60 mm
- head part with cut-to-length spindle and sleeve
- WRAS 2011026, 2010066

	Dark Chrome	36 607 809-19
	Chrome	36 607 809-00
	Brushed Platinum	36 607 809-06
	Platinum	36 607 809-08
	Brushed Durabronze (23kt Gold)	36 607 809-28
	Brushed Bronze	36 607 809-42
	Brushed Champagne (22kt Gold)	36 607 809-46
	Champagne (22kt Gold)	36 607 809-47
	Brushed Dark Platinum	36 607 809-99

Required miscellaneous



- Wall valve 1/2" -**
- max. recess depth 145 mm
 - min. recess depth 75 mm

35 607 970 90

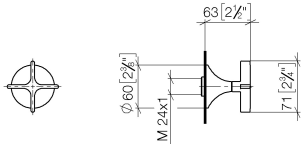


VAIA Wall valve clockwise closing 1/2" - Dark Chrome

VAIA

36 607 809

mm [inches]

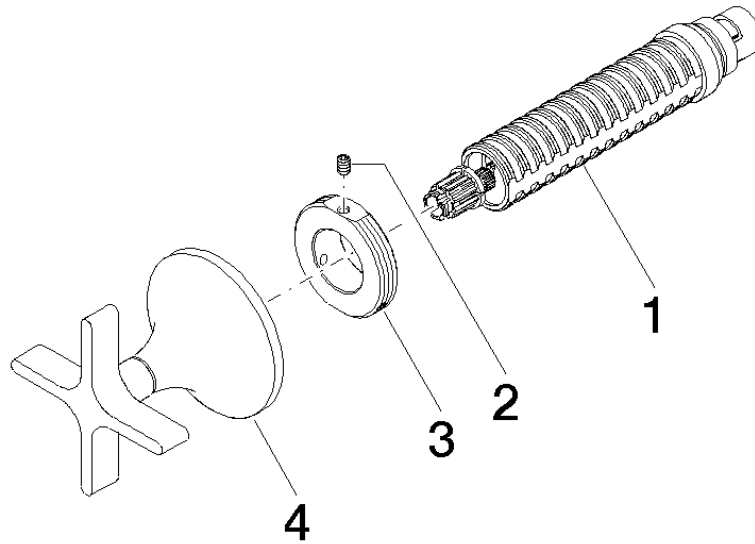


Codes & Standards

DIN 4109	EN 1111	EN 200	ISO 3822
Scottish Water Byelaws	UK Water Supply Regulations	Ü-Zeichen	

Certificates

DVGW_DW-6501DN0	WRAS_2010	LGA_29	DVGW_DW-6512DN0	WRAS_2011
-----------------	-----------	--------	-----------------	-----------





VAIA Wall valve clockwise closing 1/2" - Dark Chrome

VAIA

36 607 809

Spare parts list